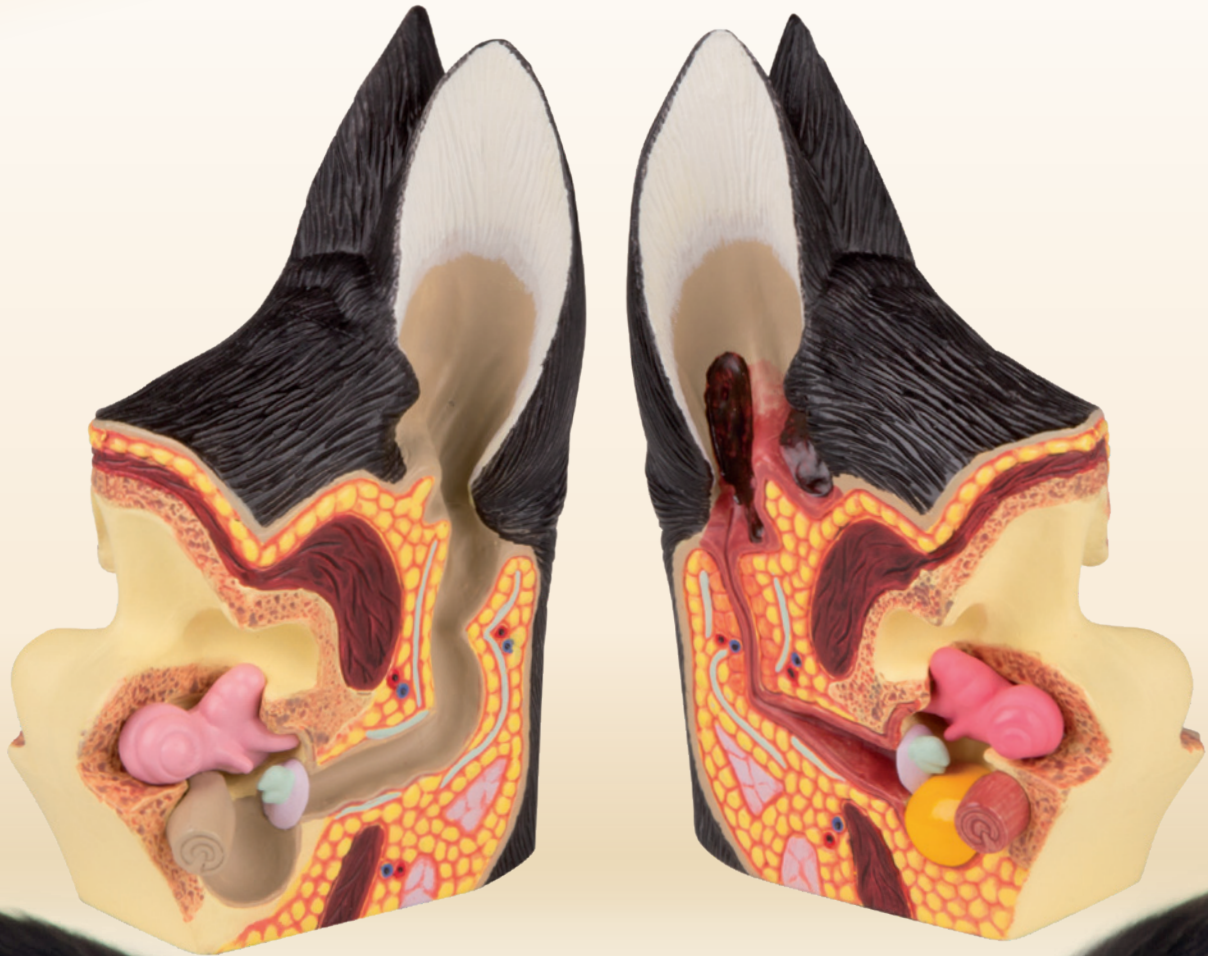


Veterinary medicine



One side of the model presents the external anatomy of the animal, while the other presents the muscular system. The model is divided into two parts in the sagittal plane, which allows to present the internal anatomy of gastrointestinal, reproductive and excretory systems.



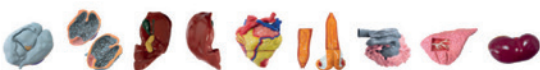
12 parts
2/3 natural size

Sheep model

The model can be disassembled into 12 pieces:

- ✓ 2 body halves, divisible in the sagittal section
- ✓ stomach (2 pieces)
- ✓ small and large intestine
- ✓ heart (2 parts)
- ✓ liver with spleen
- ✓ one limb
- ✓ lung
- ✓ 2-part uterus (reproductive system)
- ✓ rectum, bladder
- ✓ excretory system

Ref.no. VET3310



15 parts
1/3 natural size

Bovine model

The model can be disassembled into 15 pieces:

- ✓ one limb
- ✓ heart (2 pcs)
- ✓ lung
- ✓ small and large intestines
- ✓ stomach (3 pcs)
- ✓ kidney
- ✓ uterus with an ovary (2 pcs)
- ✓ liver
- ✓ tail, half with the muscular system, half with the external anatomy. When the internal organs are taken out, the model presents the muscular system of the thorax and the abdomen.

Ref.no. VET3300





NEW
PRODUCT

NEW
PRODUCT

20 parts
1/2 natural size

16 parts
1/3 natural size

Pig Model

The model can be disassembled into 20 pieces:

- ✓ right half of the body
- ✓ left half of the body
- ✓ half of the head
- ✓ ear cartilage
- ✓ large intestine
- ✓ small intestine
- ✓ left front leg
- ✓ liver (2-parts)
- ✓ heart (2-parts)
- ✓ kidney
- ✓ adrenal gland
- ✓ spleen
- ✓ lung (2 parts)
- ✓ tail
- ✓ stomach (2 parts)
- ✓ parotid gland
- ✓ half of the uterus

Ref.no. VET3320

Details:



Horse (mare) model

The model can be disassembled into 16 parts:

- ✓ Right side of the head (outside)
- ✓ Left side of the head (muscles)
- ✓ Right side of the trunk (outside)
- ✓ Left side of the trunk (muscles)
- ✓ Left front leg
- ✓ Right gluteal muscle
- ✓ Heart (2 parts)
- ✓ Left lung
- ✓ Stomach (2 parts)
- ✓ Small intestine
- ✓ Large intestine
- ✓ Liver
- ✓ Left kidney
- ✓ Spleen

Ref.no. VET3330

Details:



Advanced simulator for artificial insemination (AI) of the cow

The simulator represents the rear half of a female breeding cattle on a base with castors. It enables the training and observation of the palpation manipulation that is carried out during the insemination process and the examination per rectum.

Characteristics: The set contains a complete artificial reproductive system, an uterus in the oestrus and a handpiece. An interchangeable full-size representation of the reproductive system with characteristic anatomical structures, mounted in the correct anatomical position in the simulator structure, suspended in the pelvic cavity naturally imitates a natural suspension made of flexible materials, imitating them and offering a realistic treatment sensation of living Tissue - applies to the external elements (vulva) and internal (cervical). The internal organs of the model can be heated to natural temperature.

Specification: Length: approx. 95 cm, height: approx. 145 cm, width: approx. 50 cm. Basic dimensions: 82 x 76 cm. Approximate weight. 50 kg.

Available as an option / spare part:

- ✓ Uterus in oestrus
- ✓ Standard cervix for easy AI procedure
- ✓ Cervix for difficult AI procedure
- ✓ Uterus at different stages of pregnancy
- ✓ Set with ovaries: small follicles, large follicles, corpus luteum, cyst
- ✓ Insemination gel
- ✓ Silicone vagina tube
- ✓ Rectum (removable bag)
- ✓ The posterior part of the reproductive system
- ✓ Tail



Ref.no. VET3400
Details:



Gynecological training dog *Bella*

Gynecological examinations in the bitch belong to the basic manual skills in small animal practice. "Bella" enables the training under lifelike conditions, from parturition to endoscopic insemination. With her detailed genital tract our "Bella" provides a lifelike simulation of the bitch. At the integrated uterus, a gynecological examination can be performed via speculum or endoscope. Artificial insemination can be trained with a balloon catheter or with endoscope-guided catheterization of the cervix. The uterus presents a detailed mucosa with secondary folds, the dorsomedian fold and a cervix. The blood collection at the V. cephalica for hormone determination in the context of an ovulation detection can be trained with the integrated blood collection pad. The detachable back cover allows the visualization of the anatomical position of the reproductive tract and the kidneys in the pelvis. If necessary, the uterus, V. cephalica and internal organs can be removed and exchanged easily.

„Bella“ includes:

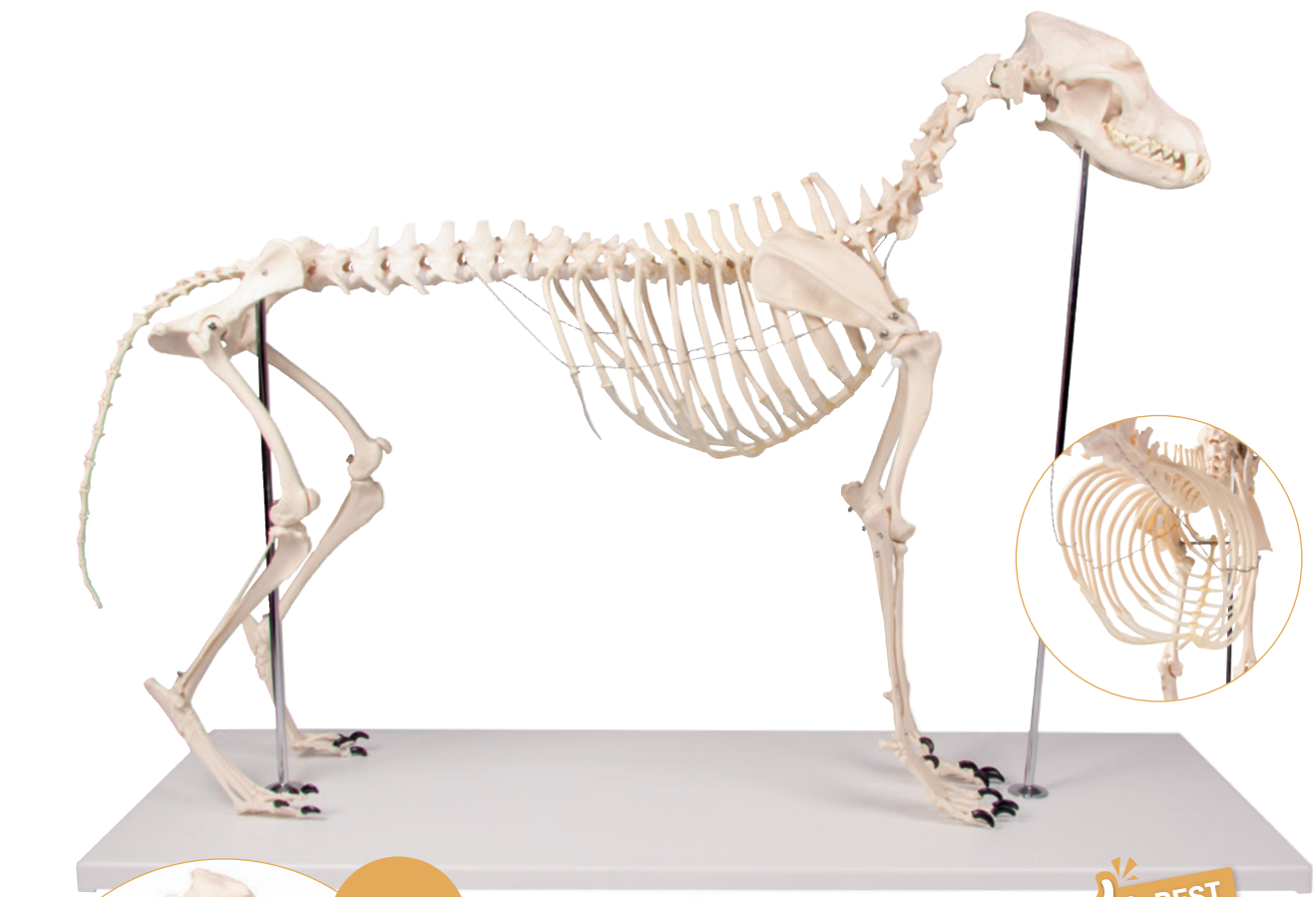
- ✓ Uterus
- ✓ Pelvis
- ✓ Kidneys
- ✓ V. cephalica
- ✓ Blood bag
- ✓ Palpable abdomen (optional)

Ref.no. VET5000
Details:

Uterus
Ref.no. VET5010

Birth Simulation Module
Ref.no. VET5020

Puppy set of three
Ref.no. VET5030



Natural size

BEST SELLER

Dog Skeleton *Olaf*

The Dog Skeleton "Olaf" is an actual cast of the skeleton of a medium-size crossbreed dog with about 45 cm shoulder height. The spine is not moveable, tail is removable. The legs can be moved and removed, perfect for use in courses and further education. The lower jaw is movable mounted, the teeth are represented naturally.

Ref.no. VET1700
Details:



Canine Knee

Knee of an average size dog showing femur, fibula, patella and tibia bones; lateral and medial meniscus; anterior and posterior cruciate ligaments; as well as other ligaments and tendons.

Ref.no. VET1050
Details:



Canine Hip

Average size dog pelvis features both normal and osteoarthritic bone, body of ilium, greater trochanter, head in acetabulum, herniated disc, neck of femur, nerve, sacrum, and third trochanter.

Ref.no. VET1060
Details:



Canine ear, healthy/diseased

This handy model Has a normal side with cochlea, auditory ossicles, auditory tube, tympanic bulla, middle ear cavity, tympanic membrane, horizontal canal, vertical canal, auricular cartilage, pinna and temporalis muscle; and a diseased side showing inflamed inner ear structures, inflammatory exudate in tympanic bulla, ear canal with partial occlusion from cellular hyperplasia, and an reddened (inflamed) outer ear.

Ref.no. VET1210

Details:

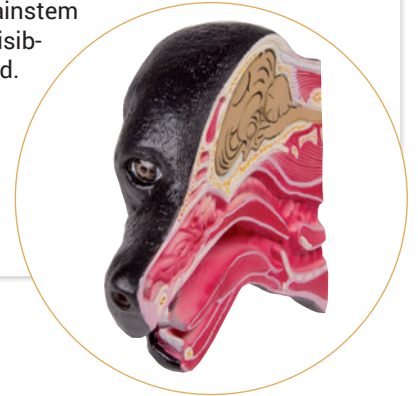


Median section of a dog head

This scaled down model of a median sectioned dog head depicts graphically the anatomy of mouth, tongue as well as throat with trachea and esophagus. Also the olfactory organ, the skull with sinuses and a brain section with cerebellum, brainstem and afterbrain are visible. Supplied on stand.

Ref.no. VET1300

Details:



Dog skull with didactic painting

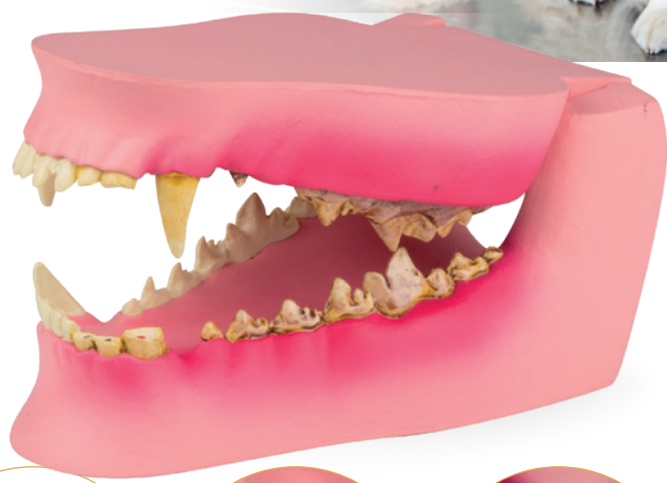
This life-size replica of a dog's skull shows the anatomical structures and is didactically painted so that the individual bones of the skull can be clearly seen and their location and relationship to one another can be learned. An ideal tool for canine osteopaths and canine physiotherapists. The lower jaw can be moved and removed.



Ref.no. VET1708

Details:





Canine jaw with healthy and diseased Teeth

The jaw of a middle size dog shows health teeth on the right side and dental diseases on the left side. The following nine dental diseases are depicted in the model:

- ✓ Incisors, worn
- ✓ Canine, fractured
- ✓ Deciduous tooth, retained
- ✓ Premolar missing
- ✓ Gingival recession
- ✓ Gingivitis
- ✓ Periodontal disease
- ✓ Plaque
- ✓ Tartar accumulation

Ref.no. VET1194

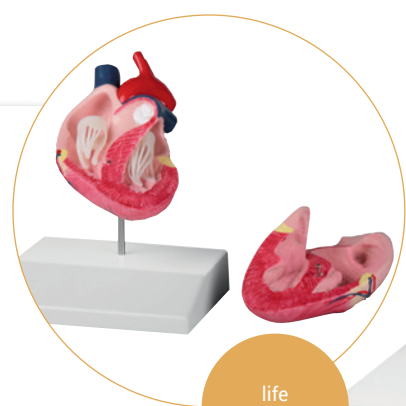


The two jaw halves are connected with a joint allowing movements as well as disassembly of the jaw.

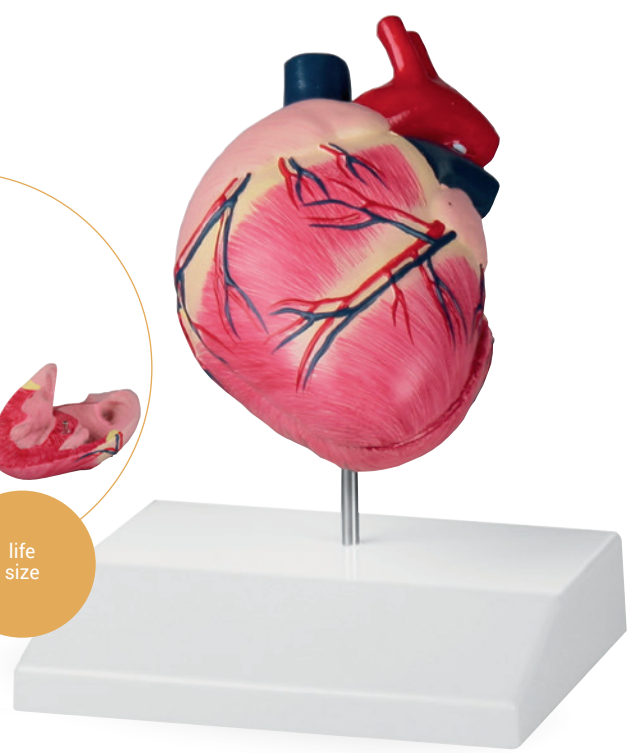
Canine heart

This model of the heart of an average size dog can be dissected into two parts. After removing the front heart wall the model shows ventricles, valves and atriums. On stand.

Ref.no. VET1250



life size



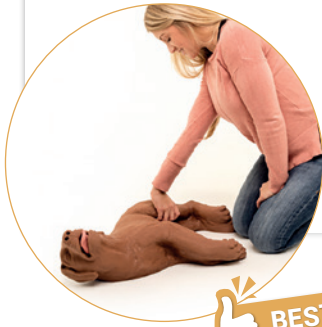
CPR dog CasPeR

CasPeR the CPR Dog provides training in mouth-to-snout resuscitation with individual-use, disposable airway bags. These economical disposable shield/lung bags eliminate cross contamination between students and the need to disinfect the manikin after every use. This dog manikin can be used to teach proper hand placement for compressions, depth of compressions, airway maintenance, femoral pulse check, and adequate ventilation. The model has no indication function, the teacher has to judge proper exercise.



Replacement airways, disposable. Pack of 100pcs
Ref.no. VET2500B

Ref.no. VET2500
Details:



Advanced CPR dog

The advanced sanitary CPR dog provides each student with their own sanitary muzzle and airway system. The muzzles may be disinfected and reused, while the lower airways are disposable. In addition to practice in assisted breathing, students may practice the appropriate rate, pressure, and position of cardiac massage; and coordinate the respiratory cardiovascular functions. An IV can even be established for more advanced training. The Advanced CPR Dog is connected to a small box that displays a light when the correct ventilation volume is applied, another light indicates correct position for cardiac massage, a third light indicates correct compression depth, and an audible beep and light indicates excessive pressure is being applied. A visible chest rise appears when correct ventilations are applied.



Ref.no. VET2550
Details:

Replacement muzzles, 10 pcs
Ref.no. VET2550A

Replacement lungs, 10 pcs
Ref.no. VET2550C



Jerry K-9 CPR manikin

Jerry is your perfect teaching partner for pet-first-aid. The Jerry manikin has working lungs and an artificial pulse built to teach mouth-to-snout resuscitation. It has disposable lungs for hygienic training. The front leg is movable to allow location of compression site for chest compressions. It can splint, thus allowing students to learn bandaging. Accessories include a carrying case with kneeling pad, brush and 5 disposable lungs. Face shields for group training are sold separately.

Ref.no. VET4000
Details:

Advanced Airway *Jerry* manikin

Advanced Airway Jerry is a full-sized manikin built with a lifelike airway. Clearly presented are the trachea, esophagus and epiglottis. These carefully built organs, coupled with working lungs and an artificial pulse will assist students in endotracheal placement, compressions, and mouth-to-snout resuscitation. It has a disposable lung that can be changed if the manikin is used for mouth-to-snout resuscitation. Advanced Airway Jerry is also designed to splint and bandage. Parts can be cleaned and replaced.

Ref.no. VET4010

Details:



Critical Care *Jerry*

Critical Care Jerry is engineered as a complete emergency room veterinary training manikin. It has the ability to simulate trauma and features jugular and vascular access. Realistic representations of the trachea, esophagus, and epiglottis are built into the airway. These provide for the training of.

- ✓ airway management
- ✓ ventilation
- ✓ endotracheal intubation
- ✓ mouth-to-snout resuscitation
- ✓ external chest compressions

The manikin comes with working lungs and artificial pulse and features for splinting and bandaging. Included in the carrying case are a kneeling pad, endotracheal tube, syringe, brush, and 5 disposable lungs. Critical Care Jerry also comes with a bonus item – a full K-9 IV trainer in its own carrying case.

Ref.no. VET4020

Details:



Spare parts for VET4000, VET4010 + VET4020:

**Replacement lungs,
24pcs pack**

Ref.no. VET4000A

**Replacement lungs,
72pcs pack**

Ref.no. VET4000B



Femoral Leg Bone Fracture

An added feature to the Critical Care Jerry manikin can now be included – a long oblique fracture of the right femoral leg bone. This custom Critical Care Jerry will allow students to learn how to set and repair common K-9 fractures. The non-removable fracture can also be added to our "Advanced Airway Jerry", "Jerry", manikins.

Ref.no. VET4022

Details:





Bandaging Manikin *Rufus*

Painstakingly constructed, Rufus Bandaging Manikin is an all-rounded tool to the critical care student. This full-sized model is ideal for practical lab skills and practicing advanced bandaging techniques. Apart from administering first aid, the manikin can be used to practice mouth-to-snout resuscitation. The left knee, elbow, carpal and hock joints are capable of 90° movements. Shoulder and hip joints also have the flexibility of 90° rotation. With the new features, users can now also practice the Velpeau Sling on the right forelimb and the Ehmer Sling on the right hind leg. Rufus comes with five disposable lungs, a brush, and carrying case with kneeling pad.

Ref.no. VET4050

Details:



In short, these are just some of the bandaging techniques users can practice on Rufus:

- ✓ 90-90- flexion sling
- ✓ Carpal sling
- ✓ Robert Jones bandage
- ✓ Velpeau sling
- ✓ Ehmer sling
- ✓ Limb bandage using stirrups
- ✓ Trunk bandage
- ✓ Tail bandage
- ✓ Padded hip bandage
- ✓ Head and Ear bandage
- ✓ Casts

K9 Breath/Heart Sound Simulator *Goldie*

The highlight of this breath/heart sound (BHS) simulator is to allow students to perform auscultation, offering them opportunities to hear the different sounds with a stethoscope. Instructors can choose various sound scenarios for the classroom. This product uses plug-in modules, with data collated from actual patients. Five speakers are installed directly in our Goldie canine BHS manikin. The BHS unit also has two lights that illuminate during expiration. It is powered by a 9V battery and comes with a limited warranty. Each Goldie comes with a tutor MS, one Breath Sound module, one Heart Sound module, five installed custom speakers and a 9V battery.

Breath Sound module includes:

Tracheal, Vesicular, Bronchial-Vesicular, Wheezes, Monophonic Wheeze, Pleural Friction Rub, Stridor, Cavernous, Crackles, Pulmonary Edema and Puppy.

Heart Sound module includes:

Atrial Fib, Mitral Regurgitation, Mitral Valve Click, Normal Heartbeat, PDA, Pulmonic Stenosis, Respiratory Crackles and MR Murmurs, SAS, VPC and VSD.

Ref.no. VET4040

Details:





Canine Dental / Surgical Model

This anatomically correct simulator allows surgical training possibilities:

- ✓ Simulated teeth and bone are surrounded with soft rubber gums, complete with periosteum and periodontal ligament
- ✓ Allows for practical simulation including nerve blocks, luxation, elevation and extraction of any tooth, as well as tongue, epiglottis, esophagus and trachea to allow for intubation training
- ✓ Maxilla and mandible are easily replaced
- ✓ Model comes with one radiodense, extraction jaw set to practice radiography positioning techniques prior to, and after, tooth extraction.
- ✓ Clamp and arm for securing model to table is included
- ✓ Any tooth can be extracted

Ref.no. VET4570

Details:



Canine Dental Technician Model

This very true-to-life simulator was especially developed for dental technology. It has a wide variety on training possibilities.

- ✓ Simulated teeth and bone are surrounded with soft rubber gums
- ✓ Allows for practical simulation including manual and ultrasonic scaling, probing, nerve blocks, as well as tongue, epiglottis, esophagus, and trachea to allow for intubation training
- ✓ Maxilla and mandible are easily replaced
- ✓ Model comes with clamp and arm, and two jaw sets:
- ✓ One set with calculus accumulation for scaling
- ✓ One radiodense jaw set to practice positioning techniques for radiographs
- ✓ X-ray set has gums complete with periodontal ligament



Ref.no. VET4560

Details:





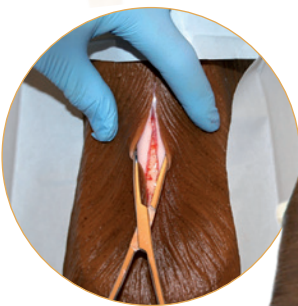
K-9 Intubation Trainer

Elegantly simple – this model is built for performing proper endotracheal placement. The ET tube either goes correctly into the trachea or wrongly into the esophagus. Improved representations of the trachea, esophagus and epiglottis are all realistically crafted into this dog bust.

It also features an airway with working lungs. Because the head is attached to a table clamp with a pivot base, it can be easily manipulated.

Ref.no. VET4080

Details:



Louie K9 Tracheostomy Model

Often-time, in life-threatening upper airway obstruction, especially during tactical field care, performing tracheostomy is vital to the survival of K9s. Based on the numerous requests from our military and critical care customers, we are pleased to introduce our Louie Tracheostomy Model. Cricothyrotomy may also be performed on the model. Incisions can be made to the skin

layers, the cricothyroid membrane and between the tracheal rings. Louie comes with three sets of replaceable tracheas and skins and one artificial lung. Incisions and sutures can be made on the skins and trachea. Additional tracheas and skins may be purchased separately. The model does not come with artificial blood.

Ref.no. VET4090

Details:



Canine Head Vascular Access Simulator

The Canine Head Vascular Access Simulator is designed for practice on jugular blood draws and catheter insertion on small animals. This model features proper head position for ideal procedural training as well as a simulated skin and vein that is much more realistic than latex.

Both the skin and vein are available as replacements in order to give you as much training as you need without high cost. Interested in increasing the level of difficulty? The Canine Head Vascular Access Simulator comes with TWO Vein Cushions that hold the simulated jugular vein at different depths for the opportunity for additional challenge.

Ref.no. SRE0620

Details:



Bandage trainer canine paw



A dog's paw is stressed with every step and can be easily injured by broken glass, nails, thorns or other sharp objects. With our artificial canine paw you can practice the correct application of bandages. The paw can be used to simulate a sitting or lying position. Separate toes allow for the application of cotton.

- ✓ flexible joint
- ✓ sitting or lying position can be simulated
- ✓ separate toes
- ✓ Suction cups under the stand give a safe stand.

Ref.no. VET4590



K-9 Thoracentesis

Our carefully crafted canine Thoracentesis manikin will help practitioners in performing chest tube placements, and simulating emergency trauma by aspirating air and fluid from the thoracic cavity.

Convenient anatomical landmarks are placed at key points for ease of use and quick learning.

Ref.no. VET4045



Emily K9 Positioning Manikin

Properly positioning an animal is a skill that makes a better-rounded veterinarian. Emily is built exactly for this purpose. Students learn how to position dogs for abdominal surgery, x-ray, spay and neuter, advanced spinal stabilization, spinal recumbency and more. It has natural movements and offers resistance; allowing you to safely practice techniques before working on live animals. Fully articulated, Emily has shoulders and hip joints that rotate realistically, with 90° flexibility. Also with 90° range of motion are the knees, elbows, and carpal and hock joints. This product comes complete with carrying case, kneeling pad and brush.

Ref.no. VET4030



Leg is for illustrative purposes and is not included.



Veterinary Vascular Access Sleeve, animal (dog)

Train on venipuncture and vascular access skills in life-like scenarios with no harm to participants with the Veterinary Vascular Access Sleeve. Designed to fit most dogs, cats, and manikins, the sleeve is secured by the hook and loop tabs above and below SurgiReal's simulated RealFlow tissue pad. Keeping safety as our top priority, all Vascular Access Sleeves are designed with puncture resistant material to make sure the needle won't make contact with your participant. Training applications include, but are not limited to: Needle Alignment and Vascular Access, Palpating the Vessel, and IV Placement. Included in your package is 1 Sleeve, 1 Attachable Simulated Tissue Pad, 1 Package of Artificial Blood Powder, and 1 IV Bag (1000mL). Build your skills in three steps: Sleeve attached to a manikin, Sleeve attached to stationary animal, Sleeve attached to a moving animal.



Ref.no. SRE0801

Details:



Leg is for illustrative purposes and is not included.



Small Laceration Repair Sleeve

Train laceration repair and suturing on a live participant. Designed to fit most small animals and manikins, the sleeve is secured by the hook and loop tabs above and below SurgiReal's simulated RealLayer tissue pad, ensuring knot security, and burying sutures. Keeping safety as our top priority, all Laceration Repair Sleeves are designed with puncture resistant material to make sure the needle won't make contact with your participant. Build your skills in three steps: Sleeve attached to manikin, Sleeve attached to stationary participant, Sleeve attached to participant mimicking real-life patient movement.



Ref.no. SRE0851

Details:



Cystocentesis Simulator

The Cystocentesis model simulates a small animal abdominal wall and bladder to provide a realistic platform to develop and refine skills without requiring a live animal. Able to be used in

conjunction with an ultrasound, real-world practices can be fully implemented. Included in the package is one base, two bladders, and a skin "sleeve". The skin is designed to envelope the base so that students can practice multiple times by rotating it further around the base to expose an unused skin surface.

Ref.no. SRE0610

Details:





Canine i.v. leg

We are proud to introduce this fully functional canine i.v. leg trainer at an affordable price! The trainer represents the left foreleg of a medium-sized dog in the sternal recumbent position, and features two interchangeable sleeves – normal fur for routine blood draws, and a “shaved” area for i.v. catheter insertion. The replaceable vein system demonstrates actual blood flashback. Great for bandaging and restraint/assistance practice as well. The stable, self-supporting design lets students practice alone or as a team. Perfect for veterinary schools and vet tech programs. Includes a portable storage box with built-in i.v. pole, blood powder, syringe, i.v. catheter, and two fluid supply bags.

Ref.no. VET2560
Details:



Canine Leg Vascular Access Simulator

Train on venipuncture and vascular access skills with our Canine Leg Vascular Access Simulator. Made of high quality durable silicones, the Canine Leg is designed specifically for blood collection and catheter insertion of a 22 gauge or smaller. Our simulated cephalic vein is softer than typical latex tubing to enhance realism and effectiveness. This model gives students the ability to practice their vascular access techniques without the need for a partner or a live animal. Included with your Canine Leg Vascular Access Simulator is a 1000mL IV Bag, Artificial Blood Powder, and a Skin as well as instructions for set-up, maintenance, and use of the model.



Ref.no. SRE0600



Ref.no. VET4060



K-9 IV Trainer

Specifically built to teach the drawing of blood and performing of injections, our Canine IV Trainer is the perfect pedagogical tool for this purpose. It is realistically sculpted as the hind limb of a dog. This simple product will help students become accustomed to these tactile procedures.

IM & SubK Injection Pad

Even animals have nerve cells to indicate pain or discomfort and having an injection administered by a skilled medical person makes a world of difference to a pet. Now you can practice and become more apt at injections with the improved SQ/IM Injection Pad. Practical experience may help burnish the clinical motor skills, but alas, it is providing better critical care to the injured animal that is, perhaps the ideal. This trainer features an even more realistic pad simulating canine skin and muscle tissue and comes in its own ABS case.

Ref.no. VET4070





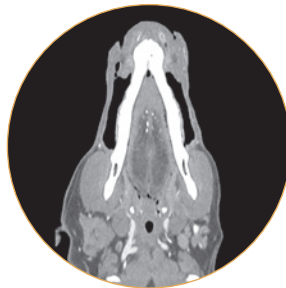
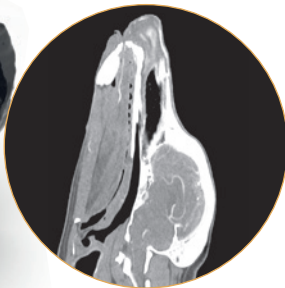
EXCLUSIVELY
at Erler-Zimmer

CT/X-Ray Phantom Dog

The phantom provides a realistic simulation of a dog without contrast medium enhancement. Bone and soft tissues are accurately represented with realistic Hounsfield units for all tissues at 120 kVp tube voltage CT imaging. Air voids including lung tissue are filled with a cellulose-polymer composite of approximately -80 Hounsfield units. If the phantom is primarily required for CT imaging at different tube voltages (e.g., 100 kVp), the calibration of Hounsfield units can be adapted accordingly upon request. The phantom also yields realistic tissue contrast in X-ray imaging.

Ref.no. VET14000

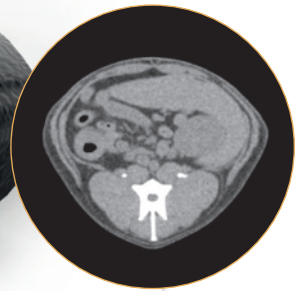
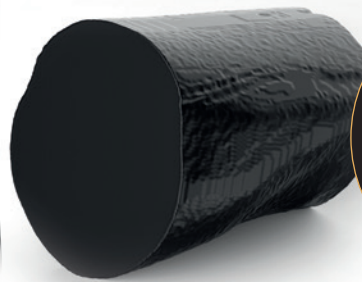
Details:



CT/X-Ray Phantom Dog Head

Ref.no. VET14010

Details:



CT/X-Ray Phantom Dog Pelvis

Ref.no. VET14030

Details:



CT/X-Ray Phantom Dog Abdomen

Ref.no. VET14020

Details:





Fluffy Feline CPR Manikin

The feline counterpart of Jerry, Fluffy has realistic working lungs and an artificial pulse. Students learn to perform feline compressions and mouth-to-snout resuscitation. It is also designed to splint and allow bandaging. Parts can be cleaned and are disposable. Accessories include a carrying case and 5 disposable lungs. Face shields are sold separately.

Available spare parts for VET4100 + VET4110:

Replacement lungs, pack of 24pcs
Ref.no. VET4100A

Replacement lungs, pack of 72pcs
Ref.no. VET4100B

Ref.no. VET4100
Details:

Critical Care Fluffy

Like its canine counterpart Critical Care Jerry, Critical Care Fluffy is a full-sized, realistic feline manikin. It has all the features present in Critical Care Jerry – trachea, esophagus, epiglottis, tongue, articulated jaw and working lungs. Designed for CPR, veterinarians can perform different techniques in resuscitation on the cat. Moreover, one can also practice cat restraint, bandaging, and venipuncture (there are several vein practice sites.) Critical Care Fluffy accessories include a carrying case, artificial training blood, IV reservoir, IV holder, 5 disposable lungs, endotracheal tube and syringe.



Ref.no. VET4110
Details:

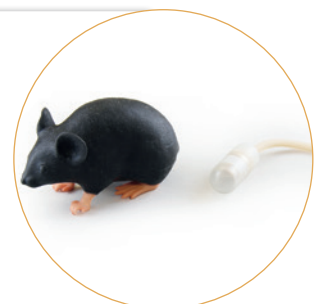


Mimicky Mouse

Experimental procedure Simulator.

- ✓ Handling
- ✓ Restraint
- ✓ Physical assessment
- ✓ Oral administration
- ✓ Intravenous administration

Ref.no. VET4220
Details:

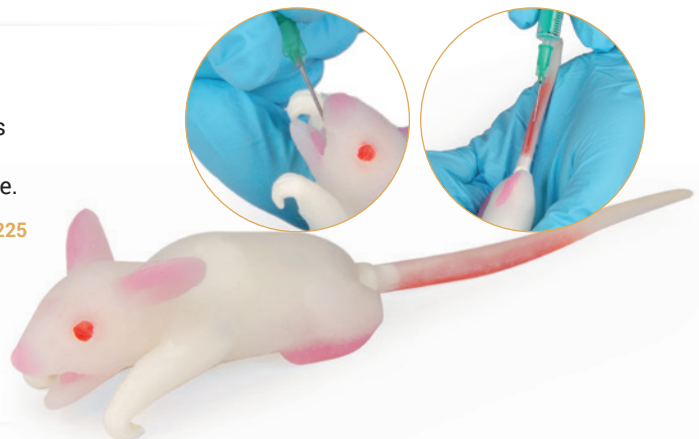


Simulation model mouse

This unique replica of a mouse allows simulation of various scenarios. The mouse has landmarks such as skull, tibia, sternum and hip bones. The forelimbs are narrowly movable. The following scenarios can be simulated:

- ✓ Fixing / Holding
- ✓ Injection into the tail vein
- ✓ Blood withdrawal from the tail vein
- ✓ Oral administration
- ✓ subcutaneous injection - dorsal and ventral

Ref.no. VET4225
Details:





Ref.no. VET4200

Details:



Mimolette Lab Rat

Mimolette Lab Rat manikin was created with these key features to end hopefully the practice of using live rats for training: Endotracheal intubation, Cardiac puncture, Blood collection from the saphenous vein. The laboratory rat has been used very widely in experiments. Following our ethos regarding humane science, Mimolette is one of our proudest creations to date. Mimolette comes complete with her own carrying case, lungs, heart, veins, artificial blood and IV accessories. **IV Access Tail:** An option for a detachable and disposable tail for the capability of IV access at the caudal vein site is available for Mimolette.

Natsume Rat

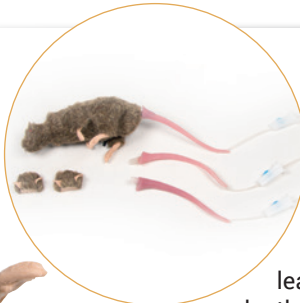
We hope to contribute to a reduction in the number of experimental animals used, and Natsume Rat is used as an alternative to animal experiments in medical, pharmaceutical, and veterinary education and the education for sophisticating animal experiment techniques. Skills that can be practiced:



- ✓ Retention / Holding
- ✓ Oral administration
- ✓ Endotracheal intubation
- ✓ Tail vein injection
- ✓ Blood collection through tail vein

Ref.no. VET4230

Details:



Squeekums

The Squeekums Rat manikin allows students, lab technicians, and handlers to learn how to confidently handle and safely manage lab rodents. The tail

of this amazing rodent model can be conveniently detached and disposed of, while

also having the capability of IV access at the caudal vein site. Tiny replaceable ears help students learn ear tagging procedures. The model is fully articulated and extremely realistic. Head, feet, and limbs move in a natural manner. Squeekums comes with its own protective case, IV accessories, artificial blood, and instructions.

Ref.no. VET4210

Details:



Replacement Tail
Ref.no. VET4210A

Replacement Ears
Ref.no. VET4210B

Monkeyleg Lea

Enables the training of invasive injection skills in adult rhesus monkeys. The integrated hip joint enables the handling and fixation of the thigh to be simulated. Blood withdrawals and injections at the femoral vein can be performed on the inside of the thigh in a lifelike manner. It is also possible to apply venous catheters to the skin-like venous module. In addition, the course of the saphenous vein on the lower leg is visualized in the compressed state. With the solid holder, "Lea" is suitable for mobile use. The vein module can be removed if necessary and exchanged in a few simple steps. "Lea" includes: Monkey leg, 3 x V. femoralis, Blood reservoir.



Ref.no. VET5100

Details:



Venenpaket
Ref.no. VET5100A



NEW
PRODUCT

Small animal subcutaneous puncture trainer

On this multi-layered tissue pad, subcutaneous injections in dogs and cats can be practiced in a realistic way. The skin-like surface can be palpated into cutis and subcutis and enables a fold of skin to be raised to locate the correct injection depth. Smaller amounts of injection volumes can be applied to the pad and different injection angles and depths can be trained. The soft surface closes after injection and allows multiple injections to be used. The trainer includes a holder with suction cups for secure attachment to the table.

Ref.no. VET5055
Details:

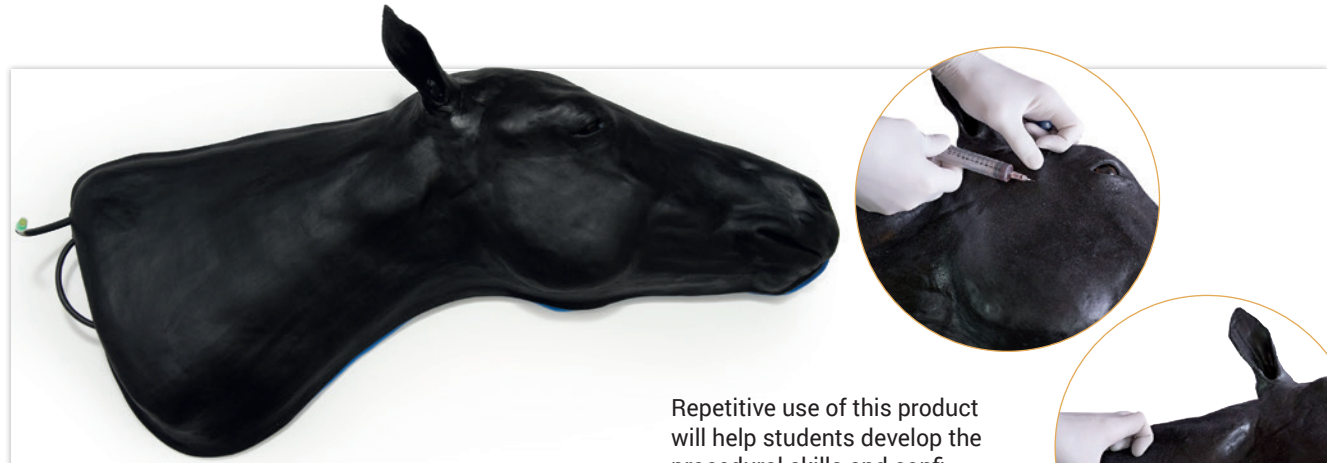


NEW
PRODUCT

IM puncture trainer small animal

On this two-layer muscle pad, intramuscular injections on small animals can be practically trained. The lifelike skin surface simulates the soft skin of a dog or cat in texture and feel. Smaller amounts of injection volumes can be applied to the pad and different injection angles and depths can be trained. The skin-like surface closes after injection and allows multiple injections to be used. This trainer comes with a suitable jig with suction feet to adhere safely on the tabletop.

Ref.no. VET5050
Details:



Advanced Equine Simulator

The Advanced Equine Simulator (in black) is the leading and most comprehensive equine simulator available. It has been designed to advance a comprehensive set of educational goals for the following procedures:

- ✓ Intramuscular Injections
- ✓ Nasolacrimal Duct Flush
- ✓ Placement of Subpalpebral Lavage System
- ✓ Eye Nerve Blocks – Auriculopalpebral Nerve & Supraorbital Nerve
- ✓ Teeth Nerve Blocks - Mental Nerve, Maxillary Nerve & Infraorbital Nerve
- ✓ Blood draw from jugular
- ✓ Jugular catheter insertion
- ✓ Blood draw from deep facial artery
- ✓ Blood draw from transverse facial vein
- ✓ Transverse facial artery catheter insertion

Repetitive use of this product will help students develop the procedural skills and confidence necessary before their first live animal experience. Ships with initial supply of artificial blood powder and 1000ml IV bag. Designed by equine surgeon educators using innovative technologies, The Advanced Equine Simulator is engineered to provide the most anatomically correct and realistic simulated equine training experience available. The Advanced Equine Simulator delivers excellence in veterinary training.

Ref.no. SRE0651
Details:



Horse Front Leg with Scapula

We include the scapula, humerus, forearm (fused radius and ulna), cannon bone and foot. The foot consists of the long pastern bone (or first phalanx), the short pastern bone (or second phalanx) and the coffin bone (or third phalanx). The coffin bone is enclosed by the hoof. The horse is an unguligrade mammal. Such mammals walk on from four to only one digit (the horse's foot is really a single digit). The equivalent of the wrist or ankle joint is high above the ground. Such adaptations result in the ability to sustain high speeds.

Ref.no. VET4370
Details:

Articulated on Base



Equine Palpation / Radiology Limb

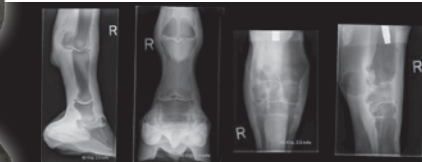
Right Distal Forelimb.

- ✓ Features a fully articulated skeleton. The bone material is radio-dense allowing for visualization using radiography techniques
- ✓ Allows movement at the carpus and fetlock joints
- ✓ Has a soft silicone skin for palpation

Features:

- ✓ The full superficial and deep flexor tendon unit which can be felt towards its insertion
- ✓ Palpation of the suspensory apparatus
- ✓ Palpable landmarks of the pastern joint
- ✓ Palpable joints including the intercarpal, radiocarpal, fetlock and coffin joints
- ✓ Includes stand for clamping to a table.

Ref.no. VET4550
Details:



Ref.no. VET4360
Details:

Horse foot, flexible

The foot consists of the long pastern bone (or first phalanx), the short pastern bone (or second phalanx) and the coffin bone (or third phalanx). The coffin bone is normally enclosed by the hoof (not included). Not shown are Ligaments, tendons, cushions and cartilage that contribute to the complicated structure of the horse's foot.



Horse Skull

The large and slender horse skull has long, broad, tapering nasals. At the front of the mouth are large incisors, designed for cropping grass. At the back of the mouth are six large, squared molars on either side of the maxilla and the mandible. The area between the incisors and the molars is called the bar. In that space sits a canine tooth (not present in all horses). The eyes sit back far on the head, typical of grazing animals. The braincase is small. The original male specimen of this cast was a large retired police horse. 2-part skull (separate cranium & jaw).

Ref.no. VET4350
Details:

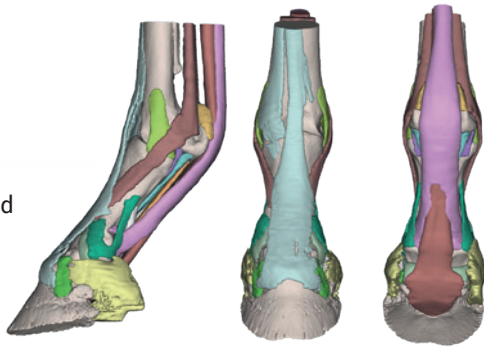
The foot of a horse as model

Derived from CT and MR co-registered data, anatomically accurate and lifesize. 3D printed in full color, each anatomical component is individually colored. Hoof capsule is available separately and anchors the distal limb in the stance position. The series consists of four models: starting from Model 1 showing the full anatomy of the foot and comprised of 25 anatomical structures to step-by-step reduced models showing deeper structures.



Modell 1

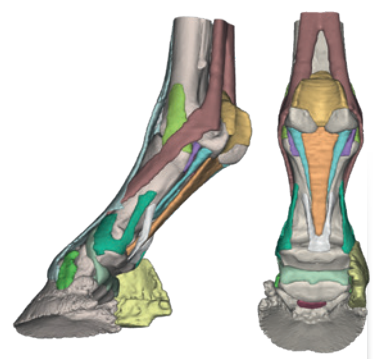
Structures: Third metacarpal bone; Proximal sesamoid bones; Proximal phalanx; Middle phalanx; Distal phalanx; Distal sesamoid bone; Ungular cartilages; Collateral lig. of the metacarpophalangeal joint; Collateral lig. of the proximal interphalangeal joint and the abaxial palmar lig. of the foot; Collateral lig. of the distal interphalangeal joint; Collateral lig. of the distal sesamoid (navicular) bone; Distal sesamoidean impar lig.; Proximal scutum and intersesamoidean lig.; Cruciate sesamoidean lig.; Short sesamoidean lig.; Oblique sesamoidean lig.; Straight sesamoidean lig.; Axial palmar lig. of the foot; Suspensory lig. and extensor branches; Deep digital flexor tendon; Superficial digital flexor tendon; Common digital extensor tendon.



Ref.no. VET4400
Details:

Modell 2

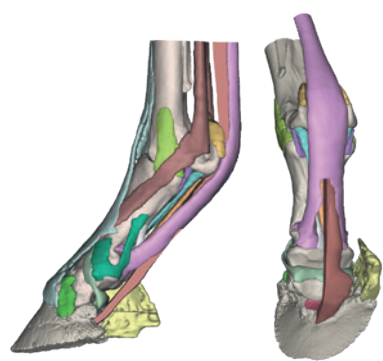
As Model 1, however, this model shows the proximal sesamoidean ligaments, impar ligament and the collateral ligaments of the distal sesamoid (navicular) bone.



Ref.no. VET4410
Details:

Modell 3

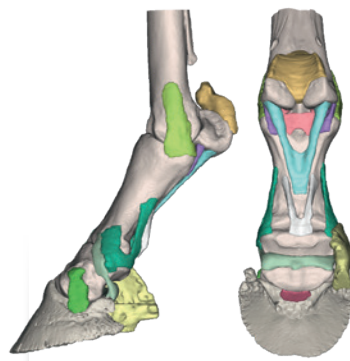
Similar to Model 1, but this model, with the deep digital flexor tendon sectioned, shows the tendon's relationship to the distal sesamoid bone and the impar ligament. One ungular cartilage is absent to show the collateral ligaments of the distal sesamoid bone.



Ref.no. VET4420
Details:

Modell 4

This model, stripped of tendons and the suspensory ligament, shows the bones of the foot and their deep supporting ligaments.



Ref.no. VET4430
Details:

Hoof Capsule

The corresponding hoof capsule is separate and anchors the distal limb in the stance position.



Ref.no. VET4400-1
Details:

REAL ANIMAL BONES

Our animal bone specimens are made by well-known taxidermists in Germany, following all animal protection and hygienic laws. We do not sell cheap and ethically dubious specimens from Eastern Europe or China.

Other natural animal specimens can be supplied on request.



Dog skeleton

Assembled, small size dog
Ref.no. VET3030



Assembled, middle size dog
Ref.no. VET3040



Assembled, big size dog
Ref.no. VET3050



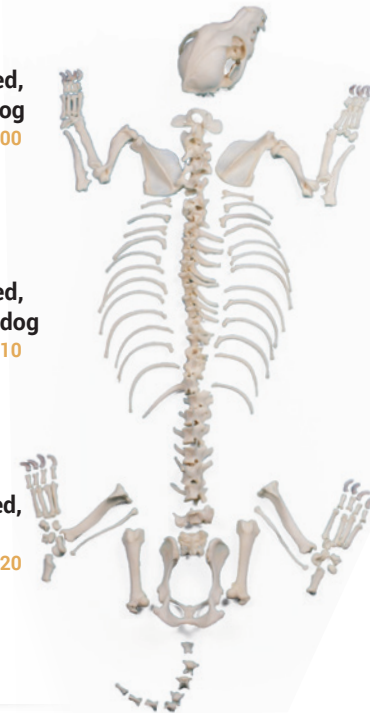
Unassembled, small size dog
Ref.no. VET3000



Unassembled, middle size dog
Ref.no. VET3010



Unassembled, big size dog
Ref.no. VET3020



Cat skeleton

Assembled
Ref.no. VET3060



Unassembled
Ref.no. VET3070



2 parts:
lower jaw
removable

Dog Skull, big size (Canis familiaris, replica)

High quality skull reproduction.
Skull length appr. 21.5 cm.



Cat Skull (Felis catus, replica)

Replica of a cat skull (Felis catus). Length: appr. 9.7 cm.



Skull, Domestic dog, German shepherd (Canis familiaris)

High quality skull reproduction.
Skull length appr. 25 cm.

Ref.no. VET2015

Details:



2 parts:
Lower jaw removable



Skull of Domestic dog, boxer (Canis familiaris)

High quality skull reproduction.
Skull length appr. 18 cm

Ref.no. VET2010

Details:



2 parts:
Lower jaw removable



Skull, Domestic dog, great dane (Canis familiaris)

High quality skull reproduction.
Skull length appr. 26 cm.

Ref.no. VET2020

Details:



2 parts:
Lower jaw removable



Skull, Wolf (Canis lupus), Alaskan Wolf

High quality skull reproduction.
Skull length appr. 28.5 cm.

Ref.no. VET2025

Details:



2 parts:
Lower jaw removable



Skull, Horse (Equus caballus)

High quality skull reproduction.
Skull length appr. 54 cm.

Ref.no. VET2050

Details:



2 parts:
Lower jaw removable



Skull, wild cat (Felis silvestris)

High quality skull reproduction.
Skull length appr. 9.7 cm.

Ref.no. VET2060

Details:



2 parts:
Lower jaw removable



Skull domestic pig (Sus scrofa domesticus)

High quality skull reproduction.
Skull length appr. 36 cm.

Ref.no. VET2035

Details:



2 parts:
Lower jaw removable



Skull domestic cattle without horn (Bos taurus)

High quality skull-reproduction.
Skull length appr. 54 cm.

Ref.no. VET2045

Details:



2 parts:
Lower jaw removable



Skull, domestic sheep, female (Ovis aries)

High quality skull reproduction.
Skull length appr. 23 cm.

Ref.no. VET2030



2 parts:
Lower jaw removable



Skull and horn Merino sheep ram (Ovis aries)

High quality skull reproduction.
Skull length appr. 29 cm, Horn width appr. 60 cm, individual horns 97 cm and 98 cm long. Horns supplied loosely.

Ref.no. VET2040



4 parts:
Lower jaw removable



Skull, domestic goose (Anser spec.)

High quality skull reproduction.
Skull length appr. 23 cm.

Ref.no. VET2065



2 parts:
Lower jaw removable



Skull, Raven (Corvus corax)

High quality skull reproduction.
Skull length appr. 12 cm.

Ref.no. VET2055



2 parts:
Lower jaw removable



Skull Hedgehog (Erinaceus europaeus)

High quality skull reproduction.
Skull length appr. 5.3 cm.

Ref.no. VET2075



2 parts:
Lower jaw removable



Skull, Turkey (Meleagris gallopavo)

High quality skull reproduction.
Skull length appr. 11 cm.

Ref.no. VET2070



Skull, Bat (Chiroptera sp.)

High quality skull reproduction.
Skull length appr. 1.5 cm.

Ref.no. VET2085



Skull, tortoise (Testudo sp.)

High quality skull reproduction.
Skull length appr. 4.5 cm.

Ref.no. VET2080





Acupuncture figure with representation of the acupuncture points, musculature and internal organs.



Acupuncture dog

Size: 30 cm

Ref.no. 2060

Details:



Acupuncture horse

Size: 25 cm

Ref.no. 2058

Details:



Acupuncture cat

Size: 19 cm

Ref.no. 2055

Details:



Acupuncture pig

Size: 13 cm

Ref.no. 2054

Details:



Acupuncture cow

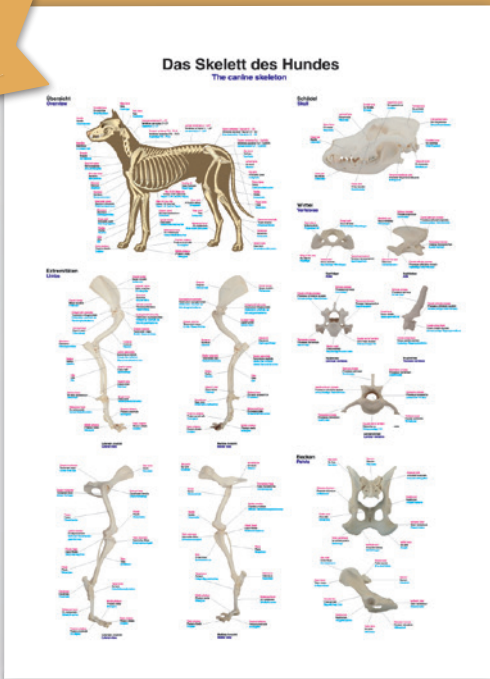
Size: 15 cm

Ref.no. 2056

Details:



EXCLUSIVELY
at Erler-Zimmer



The canine skeleton

Anatomical chart in German, Latin, English.
70x100 cm

Ref.no. VL100

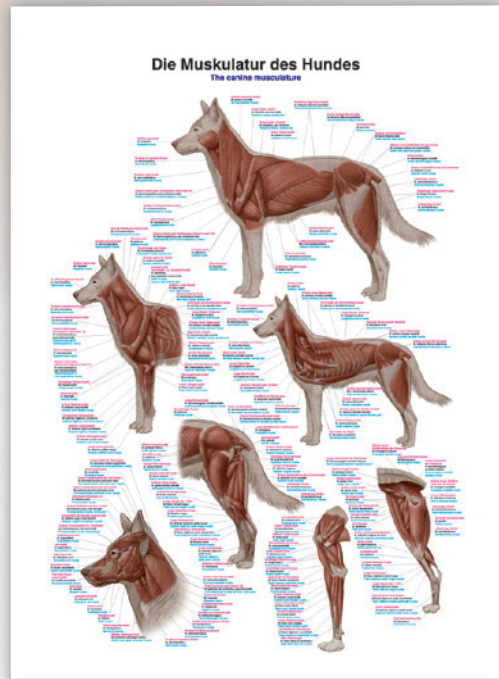
Details:



50x70 cm

Ref.no. VL600

Details:



The canine musculature

Anatomical chart in German, Latin, English.
70x100 cm

Ref.no. VL110

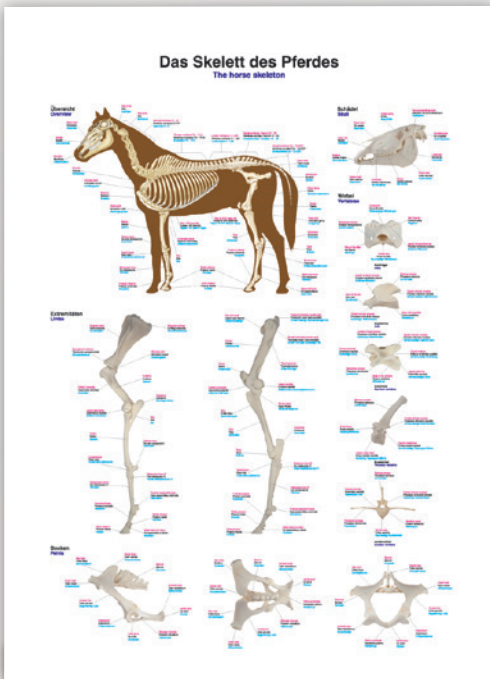
Details:



50x70 cm

Ref.no. VL610

Details:



The equine skeleton

Anatomical chart in German, Latin, English.
70x100 cm

Ref.no. VL200

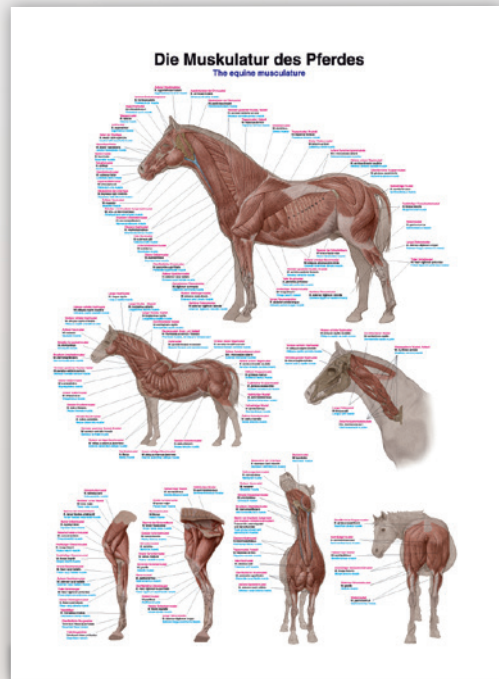
Details:



50x70 cm

Ref.no. VL700

Details:



The equine musculature

Anatomical chart in German, Latin, English.
70x100 cm

Ref.no. VL210

Details:



50x70 cm

Ref.no. VL710

Details:



*Experts in medical education
since 1950*

Erler-Zimmer GmbH & Co.KG

Hauptstraße 27

D-77886 Lauf

Phone: +49 (0)7841 / 6003-0

Fax: +49 (0)7841 / 6003-20

E-Mail: info@erler-zimmer.de

Available 24/7:

www.erler-zimmer.de

Follow us!     

