

Hemorrhage-X

Realistic bleeding in your trauma scenarios!



HEMORRHAGE-X



MEDICAL-X
ADVANCING SIMULATION

Hemorrhage-X

Hemorrhage-X is a blood pump that provides realistic bleeding for your trauma scenarios, increasing training realism.

Portable and easy to use, the Hemorrhage-X is available in two different models: Hemorrhage-X1, with one output; and Hemorrhage-X3, with three outputs.

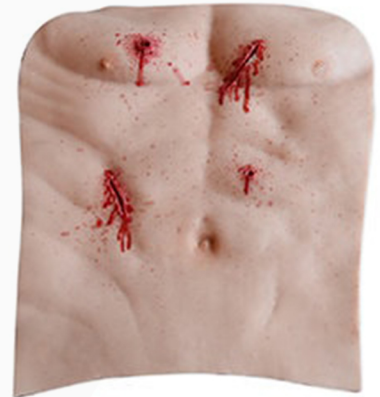


With the Hemorrhage-X app, it's possible to control various bleeding parameters using a smartphone, tablet, or laptop.

Hemorrhage-X1 can also be operated using a handheld controller.



Compatible with all of our trauma accessories, as well as other wound simulators, the Hemorrhage-X turns training into an even more immersive and memorable experience!



Functions:



Arterial and venous bleeding



Heart Rate:
20 – 220 bpm



Bleeding flow:
100 – 400mL/minute



Sensors detect applied pressure, automatically stopping the bleeding



One or three outputs with independent flows



Remote control by a web app



The stopwatch automatically starts and stops according to the bleeding, allowing for an accurate debriefing session

Hemorrhage-X1:



Technical specifications

Weight: 1.000g¹
 Liquid Container: 1.5L bag
 Outputs: 1
 Control: By web app or handheld control

Adjustable settings:

Bleeding type:
 - Continuous (Venous)
 - Pulsatile (Arterial)

Heart Rate: 20 – 220bpm

Flow: 100 - 400mL/min²

Battery life: 2 – 20 hours³

Components

1 Hemorrhage-X1 pumping system
 1 Liquid container (1.5L)
 1 tube
 1 battery
 1 battery charger
 Adapters and connectors required for use

Hemorrhage-X3:



Technical specifications

Weight: 1.600g¹
 Liquid Container: 5.0L gallon
 Outputs: 3
 Control: By web app

Adjustable settings:

Bleeding type:
 - Continuous (Venous)
 - Pulsatile (Arterial)

Heart Rate: 20 – 220bpm

Flow: 100 - 400mL/min²

Battery life: 2 – 20 hours³

Components

1 Hemorrhage-X3 pumping system
 1 Liquid container (5.0L)
 3 tubes
 1 battery
 1 battery charger
 Adapters and connectors required for use

¹ Weight and dimensions refer to the pump system, excluding the liquid container.

² Bleeding flow varies according to the task simulator used

³ Battery life varies according to the intensity of use.

Contact us



 [medical-x.com](https://www.medical-x.com)

 +31 10 341 5927

 info@medical-x.com



MEDICAL-X

 @medicalx

 @MedicalXSimulators

 @medical-x