

VATA

Realism in Clinical Simulation



2023 Product Catalog

vatainc.com | 503.651.5050 | info@vatainc.com | Canby, Oregon



Introduction

At **VATA**, we are committed to providing our customers with the most realistic and highest quality health care models. We believe that by staying true to life, and implementing feedback from trusted clinicians, we can truly provide a better educational experience that ultimately improves patient care.



VATA Founder, Tom Call, and current VATA President, Andrew Call, share their memories about the early days of VATA.



How did VATA first get started?

Tom: I was a medical sales rep and we were selling a product called an implanted port. I wasn't that good of a salesman—the nurses would practice with my product and then transferred that knowledge to the next salesman's port. They were on a sharp learning curve and after a while the patients just waved the white flag and didn't like getting poked by needles. When the salesman whose port was chosen did the in-service training, he would place the port on the table and put the tube in a glass of water. He put the needle in and drew back. The reason that you do that, is because you are looking for a blood return, and if you don't get a blood return, you know that the tube that is inside the body is occluded and that you don't want to infuse the chemo. So, this

salesman drew back and said, what you're looking for is blood. Even though he said the word blood, some people are visual learners and they are just seeing the clear liquid—not blood.

So about 2 weeks later, they had implanted a port in a woman's breast tissue. The nurse drew back and saw clear, translucent fluid. Even though the sales rep said "blood" she visualized what she had seen in the demo, which was water. She went ahead and infused the chemo and caused the woman's breast to scab over and eventually fall off. Going through that experience, I just felt like there had to be a better way. I wanted to make a model to teach people.

My wife (who is a nurse) and I started **VATA** in our garage. We didn't really know what we were doing but we took the model we

created to an INS (Infusion Nurses Society) conference in Nashville, Tennessee and I was non-stop for 3 days. The nurses just loved it. I decided we were going to call the model 400, after my 4 children. A nurse said to me, no, you need to call it something neat, like Chester Chest. I said, that's wonderful and gave her a free Chester Chest and that was how we got started.

Do you have a favorite model?

Tom: My obvious favorite is Chester Chest. They are everywhere in the world. My other favorite is Seymour Butts, just because of the name. That one we named because of those books, "Underneath the Grandstands" by Seymour Butts.

Andrew: I don't want to be redundant but it has to be Chester. We've had Chester for 35 years. When Chester was developed in early 1986, I was 5 or 6 years old. I look at my nieces and nephews now that are around that age, and they are very inquisitive. When you see your parents working on something like this you have a lot of questions—there weren't YouTube videos back then. So, they weren't watching videos to figure this out. It was trial and error. I have friends over the years that have used Chester in nursing school and they have sent me a message saying isn't that your model? Just the longevity of it is pretty cool. The fact that so many people continue to use it and it's still helping people is amazing.

Table of Contents

NEW PRODUCTS

Ultrasound Phantom Foreign Body	4
Ultrasound Phantom Bone Fracture	5

ULTRASOUND

Vascular Access Ultrasound Phantom	6
------------------------------------	---

SUTURE / SURGICAL

Suture Skills Trainer	8
-----------------------	---

INFUSION

<i>Chest Chest</i> ™	10
<i>Bonnie Bone Marrow Biopsy</i> ™ Skills Trainer	12
<i>Venipuncture Training Aid</i> ™	14
<i>Advanced Venipuncture Training Aid</i> ™	15
<i>Port - Body in a Box</i> ™	16
Basic Intraosseous (IO) Trainer	17
<i>Nita Newborn</i> ™ Infant Venous Access Simulator	18
<i>Peter PICC Line</i> ™	19

WOUND CARE

<i>Seymour II</i> ™ Wound Care Model	20
Wound Boards: Dehisced, Stapled Incision & Skin Graft	21
<i>Ostomy Pouching Trainer</i> ™	22
<i>Otto Ostomy</i> ™	24
<i>Pat Pressure Injury Staging Model</i> ™	26
<i>Wilma Wound Foot</i> ™	27
<i>Vinnie Venous Insufficiency Leg</i> ™	28
<i>Annie Arterial Insufficiency Leg</i> ™	29
<i>Freddie Fistula</i> ™ Skills Trainer	30
<i>Stan Stage 4 Pressure Injury Model</i> ™	31

VATA
Realism in Clinical Simulation

308 South Sequoia Parkway
Canby, Oregon 97013 USA

ph. 503.651.5050
fax 503.651.5052

info@vatainc.com
www.vatainc.com

Ultrasound Phantom Foreign Body – 0713/0714

NEW!



0713



0714

VATA's Ultrasound Phantom – Foreign Bodies is an excellent healthcare simulator for learning the valuable skill for localizing foreign bodies in soft tissue, especially those that are radiolucent. The unique patient simulation material is flesh colored with the tactile feel and puncture resistance of human tissue.

- Includes six different foreign bodies at varying depths.
- Flesh toned and curved with a contour that mimics patients.
- Exceptional image quality.
- Available in both light and dark skin tones.

Ultrasound Phantom Foreign Body

0713 Lightly Pigmented

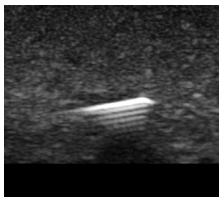
0714 Darkly Pigmented

7" x 4" x 1.3"

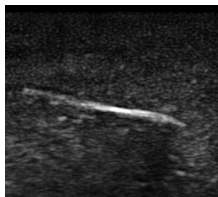
17.78cm x 10.16cm x 3.18cm

Product weight 15.49 oz/439g

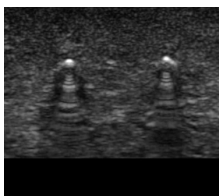
\$468.00



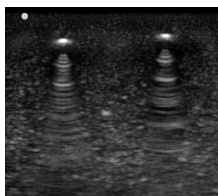
Metal Needle



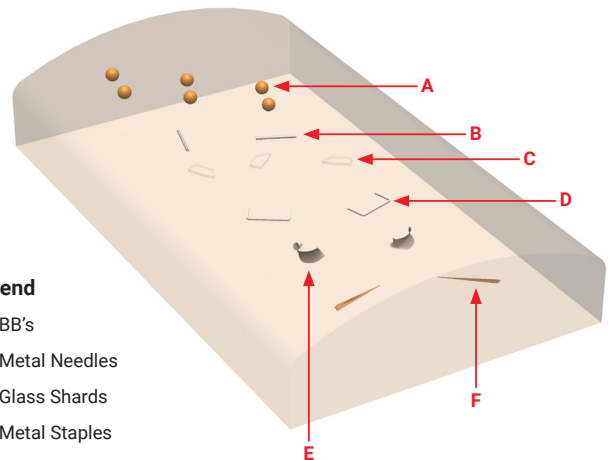
Wood Sliver



BB, deep



BB, shallow



Legend

- A** BB's
- B** Metal Needles
- C** Glass Shards
- D** Metal Staples
- E** Metal Shavings
- F** Wood Slivers

Ultrasound Phantom Bone Fracture – 0711/0712

NEW!



0711



0712

VATA's Ultrasound Phantom – Bone Fracture is a great training aid for developing skills required to localize bone fractures in soft tissue. The unique patient simulation material is flesh colored with the tactile feel and puncture resistance of human tissue.

- 5 bones present in model (3 bones superficial and 2 deeper)
- 1 healthy bone with no fracture and 4 with varying degrees of fractures.
- Flesh toned and curved with a contour that mimics patients.
- Exceptional image quality.
- Available in both light and dark skin tones.

Ultrasound Phantom Bone Fracture

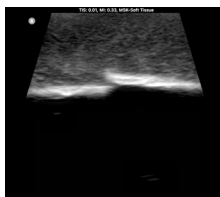
0711 Lightly Pigmented

0712 Darkly Pigmented

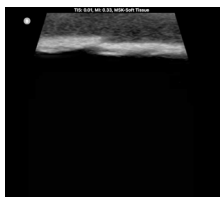
7" x 4" x 1.3"

17.78cm x 10.16cm x 3.18cm

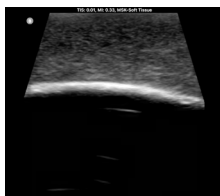
Product weight 15.49 oz/439g **\$468.00**



Large Break



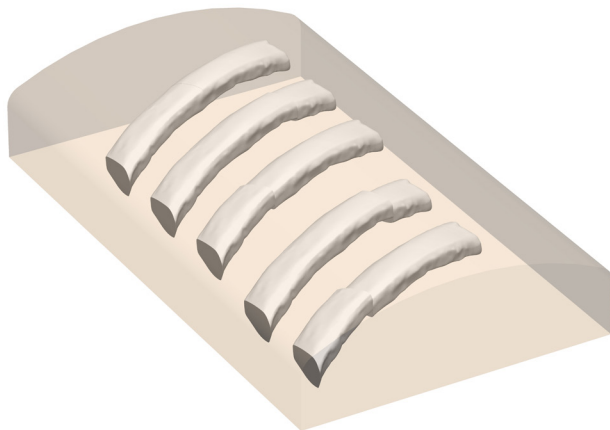
Small Break



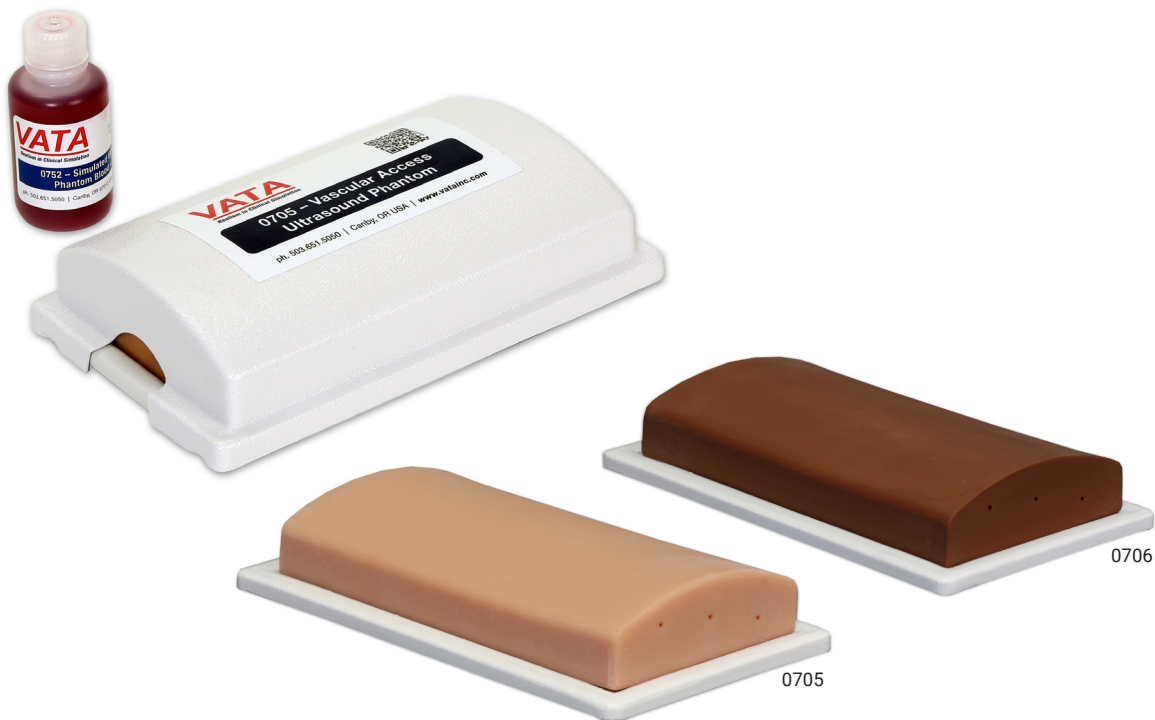
Normal Bone



Transverse Bone



Vascular Access Ultrasound Phantom – 0705/0706 & 0707/0708



VATA's Vascular Access Ultrasound Phantom is an excellent training phantom for the introduction and improvement of the techniques and psychomotor skills associated with successful ultrasound guided vascular accessing.

The unique material is flesh colored with the tactile feel and puncture resistance of human tissue. The curved contour on the top of the phantom is similar to contours on patients and has the added benefit of showing the importance of transducer positioning, as positioning can affect the quality of the image viewed—this is not possible on phantoms that are flat. The phantom can be imaged and accessed from the top, side or bottom surface, on the base or removed from the case.

We have been told by clinicians that this phantom has the best imaging of all currently available phantoms and some have commented that they reduce the gain on the ultrasound machine for advanced users wanting a more challenging vascular access experience. It is so realistic that movement of the soft tissue can be observed as the needle tip is guided to the vessel.

Successful accessing can be confirmed by visualization of the needle tip in the vessel and by a blood return. The very durable phantom material can be accessed 1,000s of times, is self-healing and can be refilled with the supplied stain resistant simulated blood. There is no need for special handling or refrigeration of the phantom.

VATA's Vascular Access Ultrasound Phantom is an excellent model for beginners and more advanced clinicians in many areas of care including—simulation labs, IV nursing, anesthesiology, radiology, ultrasound training, nurse practitioners, emergency medicine and others.

The model is supplied pre-filled with a stain resistant simulated blood, a separate 60ml bottle of stain resistant simulated blood, and a lightweight, compact, form-fitting case that protects the phantom when not in use and is the most compact housing of all currently available phantoms.

The phantom is compatible with any ultrasound imaging system with appropriate transducer.

A compact training phantom for the introduction and improvement of ultrasound guided vascular access.



Vascular Access Ultrasound Phantom

3 Vein Bifurcated

0705 Lightly Pigmented

0706 Darkly Pigmented

8.25" x 5.2" x 1.75"

20.9cm x 13cm x 4.5cm

Product weight 1.3 lbs/587g

\$468.00

4 Vein Bifurcated with Deep Vein

0707 Lightly Pigmented

0708 Darkly Pigmented

8.25" x 5.2" x 1.75"

20.9cm x 13cm x 4.5cm

Product weight 1.3 lbs/587g

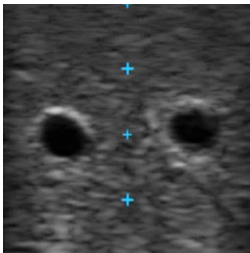
\$468.00

Accessories & Parts

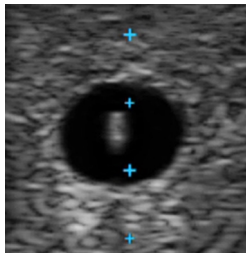
0751 Replacement Simulated Ultrasound Blood 8 oz.

Product weight 9.6 oz/273g

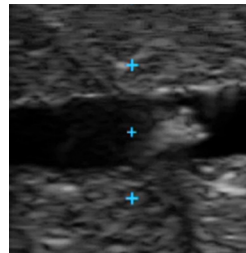
\$30.50



Bifurcated vein

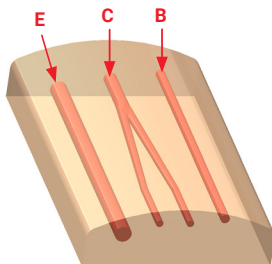


Large vein being accessed



Longitudinal access of small vein

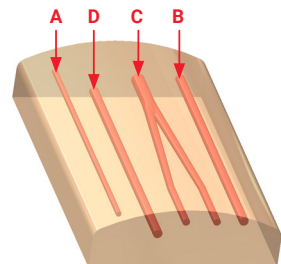
Vascular Access Ultrasound Phantom,
3 Vein Bifurcated – 0705/0706



Legend

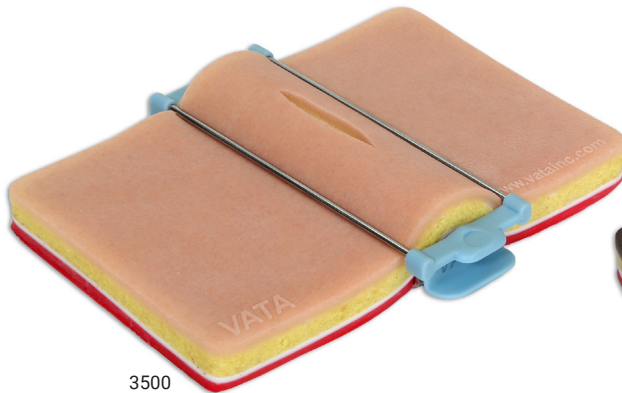
- A** Very small superficial vein
- B** Small vein
- C** Mid-sized vein which bifurcates into two smaller vessels
- D** Mid-sized vein at deep depth
- E** Large vein at deep depth

Vascular Access Ultrasound Phantom,
4 Vein Bifurcated – 0707/0708

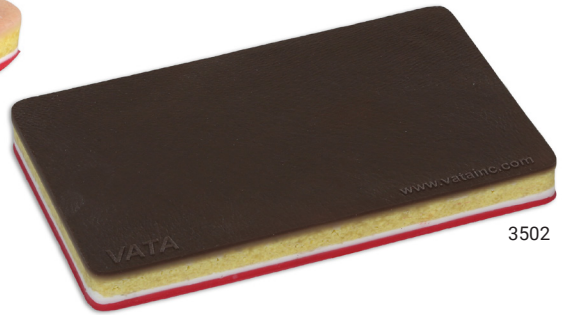


*Ultrasound machine not sold by VATA.

Suture Skills Trainer – 3500/3502



3500





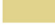
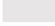

3502

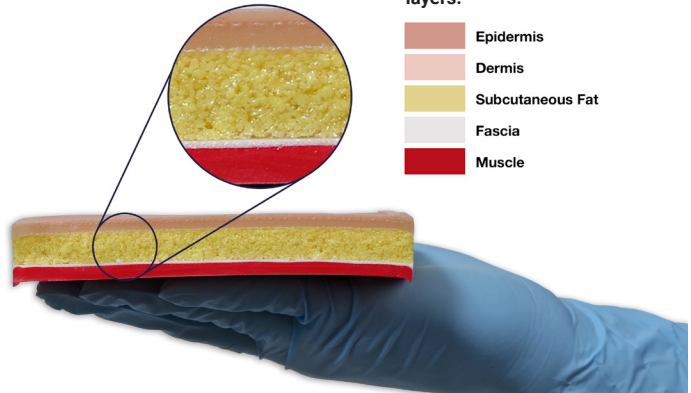
The **Suture Skills Trainer – 3500** was developed with the help of Dr. Michael Zenn, Director of the Human Tissue Lab at Duke University.

Each individual layer is identifiable and of the anatomically correct color, strength, firmness and feel. The unique materials used allow for practicing superficial, subcuticular and complex deep wound suturing and with proper tension, the suture will not “tear through”. The **Suture Skills Trainer’s** tissue pad moves just like real human tissue when making an incision or when suture tension is applied. Sutures can be removed and you can reuse the site numerous times.

The trainer is also supplied with a proprietary tensioning device for use with the tissue pad, so the user can adjust the distance between the two cut tissue edges. This offers the user a more realistic feel and increases the challenge when closing the tissue under varying degrees of tension.

The realistic tissue pad consists of 5 anatomically correct tissue layers:

-  Epidermis
-  Dermis
-  Subcutaneous Fat
-  Fascia
-  Muscle



All the tools you'll need to improve proper suture technique, competence and confidence.

The instruments are of a much higher quality than those generally supplied with suture models. The **Suture Skills Trainer – 3500** comes with everything you need:

- Needle driver
- Adson 1-2 forceps
- Hooked Littauer scissors
- Surgical safety scalpel for reduced risk of injury
- Skin staple remover
- One dozen nylon sutures
- Disposable skin stapler
- Custom carrying case is lightweight, compact and specially designed for each of the trainer's components

Practice outside the simulation lab is so important to develop proper surgical technique and with the **Suture Skills Trainer – 3500**, you can take it anywhere to enhance developing psychomotor skills, proper surgical technique, competence and confidence.



Suture Skills Trainer

3500 Lightly Pigmented

3502 Darkly Pigmented

9.4" x 6.7" x 2.5"

24cm x 17cm x 6.3cm

Product weight 2.26 lbs/1.2kg **\$236.00**

Accessories & Parts

Suture Pad – Replacement

3501 Lightly Pigmented

3503 Darkly Pigmented

Product weight 1.1 lbs/500g **\$104.50**

3510 Tension Device – Replacement

Product weight 4.8 oz/135g **\$63.25**

3515 Instrument Kit – Replacement

Product weight 3.4 oz/95g **\$47.50**

3516 Skin Stapler

Product weight 1.7 oz/47g **\$15.25**

3517 Skin Staple Remover

Product weight 0.6 oz/17g **\$5.25**

3525 Sutures (1 doz.)

Product weight 1.1 oz/30g **\$12.75**

3535 Case – Replacement

Product weight 9.2 oz/261g **\$57.00**

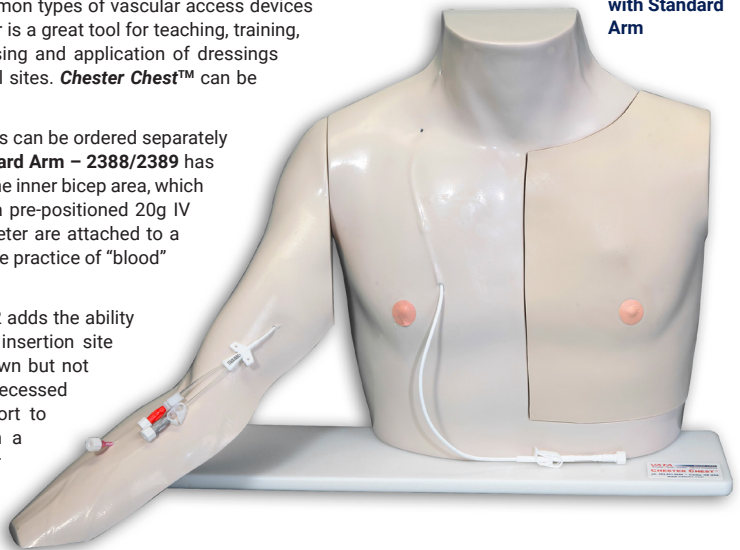
Chester Chest™ – 2400/2402/2410/2412

Chester Chest™, an industry standard for 30 years, enables clinicians, patients, and support persons to develop competence with the most common types of vascular access devices within one realistic and portable training aid. Chester is a great tool for teaching, training, competency testing, and skills assessment. Cleansing and application of dressings and securement devices can be demonstrated at all sites. **Chester Chest™** can be used in either an upright or supine position.

Chester Chest™ with Standard Arm 2400/2402 (arms can be ordered separately to update your existing **Chester Chest™**). The **Standard Arm – 2388/2389** has a dual lumen 5FR PICC exiting the basilic vein from the inner bicep area, which is slightly raised for easy identification as well as a pre-positioned 20g IV catheter in the forearm. The dual PICC and IV catheter are attached to a simulated blood reservoir bag in the arm to permit the practice of “blood” withdrawal and fluid infusion.

Chester Chest™ with Port Access Arm – 2410/2412 adds the ability to include a peripheral port posterior to the PICC insertion site in the recessed area of the arm (Optional port shown but not included—see part **0417** to order). The base of the recessed area is made of soft material that permits the port to “float” when accessed. This area is covered with a removable tissue-like flap which, when placed over the port, provides the realistic feel of palpating and accessing. The Port Access Arm 2386/2387 can be purchased separately to update any Chester, new or old.

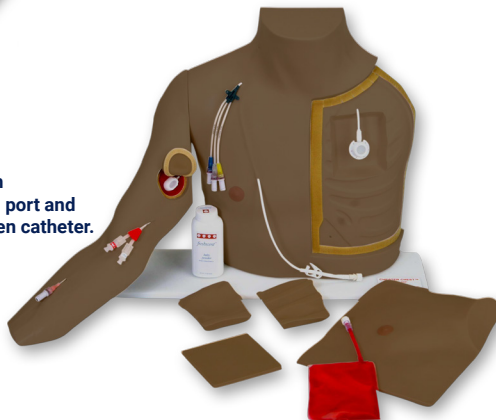
2400 – Shown with Standard Arm



2386 – Port Access Arm. Shown with optional peripheral port.



2412 – Shown with optional peripheral port and optional triple lumen catheter.



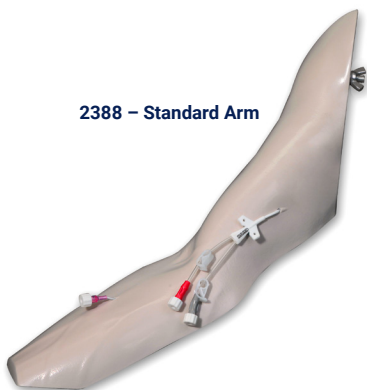
The right chest area of **Chester Chest™** has a 9.6FR Tunneled Central Catheter – 0407 that is visible up to the clavicle. Openings in the external jugular vein and subclavian are discernable and slightly raised for you to attach optional Triple Lumen Catheter – 0410. If you would prefer, you can send us the catheters your institution uses and we can install them for you.

The left chest area of **Chester Chest™** consists of:

- **Chest Tissue Flap – 0405/0404** – duplicates the feel of human tissue which provides realistic practice of palpating and accessing, that is confirmed by a “blood” withdrawal.
- An implanted port – 0406 under the chest tissue flap
- A rigid underlying surface with molded ribs and a recessed area for the interchangeable inserts
- **Accessing Inserts 0420/0421, 0430/0431 and 0440/0441.** The inserts can be placed either under or over the port to simulate various accessing scenarios: normal, “tipping”, “wandering” or deeply placed.

Chester has been an industry standard for teaching healthcare professionals how to dress, cleanse and access the most common types of vascular access devices since 1987.

2388 – Standard Arm



Chester Chest™ with Standard Arm

2400 Lightly Pigmented

2402 Darkly Pigmented

15.6" x 23.5" x 10"
39.69cm x 59.69cm x 25.4cm
Product weight 7.4 lbs/3.4kg

\$861.00

Chester Chest™ with Port Access Arm

2410 Lightly Pigmented

2412 Darkly Pigmented

15.6" x 23.5" x 10"
39.69cm x 59.69cm x 25.4cm
Product weight 7.4 lbs/3.4kg

\$999.00

Accessories & Parts

0401 Optional Case (Soft Sided)

Product weight 4.0 lbs/1.8kg **\$108.75**

0451 Simulated Blood Reservoir Bag for Chester Chest Torso

Product weight 0.32 oz/9g **\$15.50**

Outer Tissue Flap Replacement

0405 Lightly Pigmented

0404 Darkly Pigmented

Product weight 1.24 lbs/562g **\$130.00**

0446 Clear Tubing for Chester Arm

Connects lines to blood bag in arm
Product weight 0.32 oz/9g **\$32.75**

0406 VATA Practice Port (IVAD)

Product weight 0.3 oz/8.5g **\$78.75**

0453 Simulated Blood Reservoir Bag for Chester Chest Arm

Product weight 0.78 oz/22g **\$17.75**

0407 Tunneled Central Venous Catheter 9FR (CVC)

Product weight 0.24 oz/6.8g **\$67.75**

Port Access Arm for Chester Chest™

Fits All Existing Chester Chest Models

2386 Lightly Pigmented

2387 Darkly Pigmented

Product weight 14.18 oz/402g **\$336.00**

0408 Catheter PICC Line

Product weight 0.39 oz/11g **\$67.75**

0410 Optional Triple Lumen Catheter (requires 0454 9.6FR Universal Catheter Connector for attachment)

Product weight 0.25 oz/7g **\$79.25**

Standard Arm for Chester Chest™

Fits All Existing Chester Chest Models

2388 Lightly Pigmented

2389 Darkly Pigmented

Product weight 13.19 oz/374g **\$284.00**

0450 Three-way Parallel Tubing Set

Connects lines to blood bag in torso
Product weight 0.42 oz/12g **\$27.00**

0405 – Outer Tissue Flap Replacement



0406 – Practice Port



Refurbishing Service

The purchase of training models is a significant financial investment. Realizing this, VATA is proud to offer a refurbishing service, to bring your model to new condition. Please call for instructions on how to return your model. Once your model is received, it will be evaluated and you will be contacted with the items and cost to refurbish for your approval, before any work is done. Turn-around time, to complete a refurbishing, is less than a week.

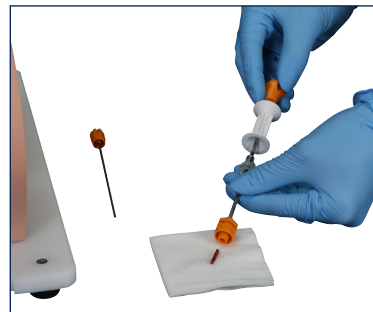
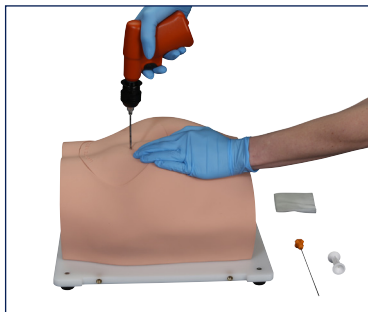
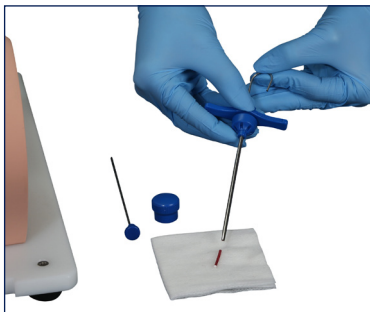
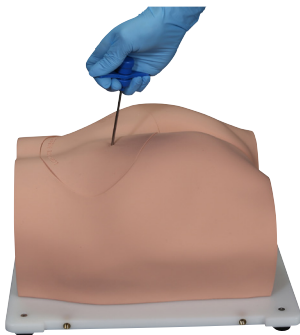
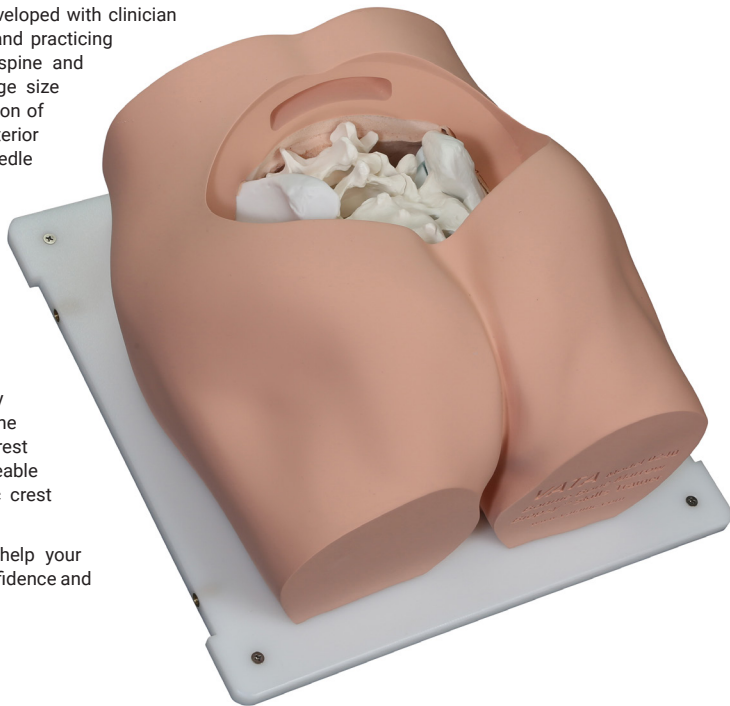
Bonnie Bone Marrow Biopsy™ Skills Trainer – 0240

Bonnie Bone Marrow Biopsy™ Skills Trainer was developed with clinician input to provide a realistic simulation for teaching and practicing bone marrow biopsy procedures of the posterior spine and pelvic region. Bonnie was modeled from an average size female pelvic bone and spine to allow for the palpation of landmarks, such as the spinous process and the anterior and posterior iliac crests to facilitate proper biopsy needle placement.

The **Bonnie** trainer includes a tilt base to simulate treating patients in prone or lateral decubitus (side-lying) positions. Right and left posterior iliac crest bone inserts are designed to be replaceable and incorporate simulated bone marrow that can be extracted during simulated biopsy procedures to confirm proper technique.

The body skin shell has a soft feel and can be easily removed to expose the entire underlying pelvic/spine anatomy and to facilitate the replacement of the iliac crest bone inserts. The design also incorporates a replaceable puncture site insert located over the posterior iliac crest bones, to allow for multiple site punctures.

Bonnie Bone Marrow Biopsy™ Skills Trainer can help your clinical staff gain valuable skills while building the confidence and competence needed for safe biopsy procedures.



First of its kind, Bonnie helps clinicians build competence needed to perform successful bone marrow biopsy procedures.



Bonnie Bone Marrow Biopsy™ Skills Trainer

0240 Bonnie Bone Marrow Biopsy™

Includes, pelvic bone structure on base with tilt stand, six sets of replaceable posterior iliac crest bone inserts, body skin shell, puncture site skin insert and soft-sided product carrying case

12.3" x 12" x 8"
31.12cm x 30.48cm x 20.32cm
Product weight 16 lbs/7.3kg

\$2,129.00

Accessories & Parts

0242 Replacement Body Skin Shell

Product weight 4.12 lbs/1.9kg **\$783.75**

0243 Replacement Puncture Site Skin Insert

Product weight 1.9 lbs/862kg **\$264.75**

0244 10-Degree Tilt Base

Product weight 3.65 lbs/1.7kg **\$180.25**

0246 Replacement Iliac Crest Bone Inserts - 5 Sets

Product weight 14.46 oz/410g **\$309.00**

0247 Replacement Puncture Site Skin Insert and 5-Sets Iliac Crest Bone Inserts

Product weight 2.8 lbs/1.3kg **\$518.00**

1 Replaceable - Body Skin Shell - **0242**

2 Replaceable - Puncture Site Skin Insert - **0243**

3 10-Degree Tilt Base - **0244**

4 5 Sets Replaceable Iliac Crest Bone Inserts - **0246**

5 Replaceable - Left & Right Iliac Crest Bone Insert

6 Base Tray with non-skid pads

7 Baby Powder for skin surfaces

8 Vaseline to lubricate the biopsy needles

*Carrying case included but not shown.

Venipuncture Training Aids™ – 1352/1353 & 1354/1355

Gain confidence accessing veins of various sizes with these portable, fluid-free trainers.

Venipuncture Training Aids have barely discernable blue veins of different sizes placed in our proprietary **Dermalike II™** semi-transparent flesh colored material. The veins are palpable across the surface of the soft tissue-like material – feels just like the real thing! The hand-eye coordination and tactile feel experienced on these models easily transfers to patient care. Model comes with a snap-on cover to protect the tissue pad when stored. 100% latex free. Cost effective, small and lightweight, a great model for staff to practice techniques and gain confidence when doing vascular access. Available in both light and dark skin tones. Small, easily portable, and fluid-free.

This model permits clinicians to learn technique and gain initial confidence when accessing the larger veins. Competency and technique can be improved by progressing from the easier large veins to the more difficult smaller and deeper veins. When accessing, the skin rolls as the vein is palpated and a “pop” is felt as the needle enters the vein. Many hospitals and home health sites utilize these training aids to insure that the competency of all staff members is assessed, maintained, demonstrated and improved continually.



1353

1355

Two-Vein Venipuncture Training Aid™

Includes two barely discernable blue veins of different sizes.

1352 Lightly Pigmented

1353 Darkly Pigmented

6.5" x 3.3" x 1.3"

16.51cm x 8.26cm x 3.18cm

Product weight 4.1 oz/116g

\$99.50



1352

1354

Four-Vein Venipuncture Training Aid™

Includes four barely discernable blue veins in three different sizes – with a fourth vein more deeply placed.

1354 Lightly Pigmented

1355 Darkly Pigmented

6.5" x 5.5" x 1.3"

16.51cm x 13.97cm x 3.18cm

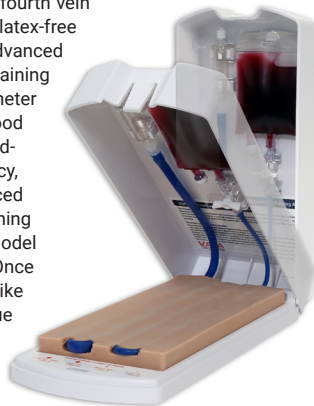
Product weight 8 oz/227g

\$143.00

Advanced Venipuncture Training Aid™ – 2365/2366

A realistic “flashback” of simulated blood confirms proper needle placement.

Our **Advanced Venipuncture Training Aid™** features four barely discernible blue veins in three different sizes, with the fourth vein deeply placed. All veins are within our proprietary latex-free **Dermalike™** for a realistic training scenario. The Advanced Venipuncture Training Aid is the perfect practice IV training kit—it’s just like accessing a real patient! As the IV catheter enters the vein, a realistic “flashback” of simulated blood confirms proper needle placement, helping build hand-eye coordination, confidence, and improving competency, while ensuring your patient’s safety. The Advanced Venipuncture Training Aid is the ideal model for training nurses, vet techs, EMTs, Phlebotomists and more. Model can handle 3,600+ accesses using a 20g IV catheter. Once the model becomes too worn, you can bring it back to ‘like new’ condition with replacement parts such as the tissue pad/vein kit and a new simulated blood bag.



Advanced Four-Vein Venipuncture Training Aid™

Includes four blue veins in a semi-transparent, tissue-like material measuring 5” x 10”, simulated blood reservoir bag, quick disconnect connector, bubble trap and backing plate that is also used as a cover when not in use.

2365 Lightly Pigmented

2366 Darkly Pigmented

12.8” x 5.9” x 2.5”

32.39cm x 14.92cm x 6.35cm

Product weight 2.1 lbs/953g **\$329.00**

Accessories & Parts

Replacement Tissue Pad/Vein

2381 Lightly Pigmented

2382 Darkly Pigmented

Product weight 14.85 oz/421g **\$195.00**

2367 Simulated Blood Reservoir – with Stopcock

Product weight 0.21 oz/6g **\$47.00**

2368 Replacement Bubble Trap

Product weight 1 oz/28.3g **\$13.50**

0385 Optional Case

Optional soft-sided case with storage pouch for supplies.

Product weight 14.4 oz/408g **\$50.00**

Simulated Blood – Stain Resistant

1491 One Quart

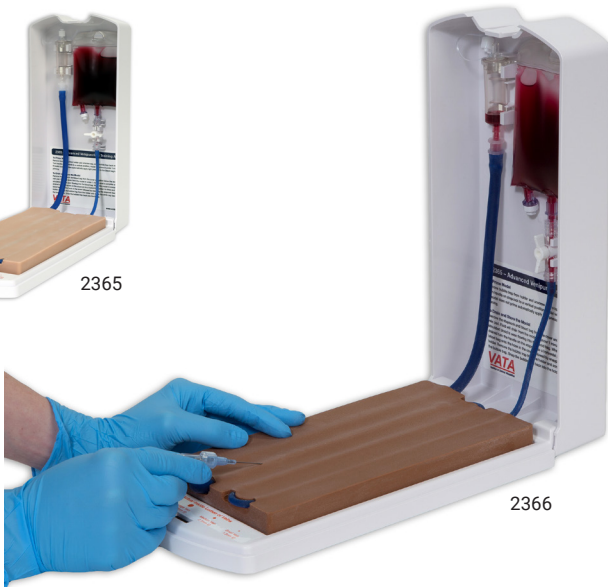
Product weight 3.2 oz/91g **\$15.50**

1494 One Gallon

Product weight 9.6 oz/272g **\$25.25**



2365



2366

Actual Inside Lumen of Veins

- 
Large Vein - Deep
 4.3mm ID
- 
Large Vein
 4.3mm ID
- 
Medium Vein
 2.3mm ID
- 
Small Vein
 1.3mm ID

Port - Body in a Box™ – 5010/5011

A compact trainer for developing port palpation and accessing skills.



5010



5011

Compact, lightweight, quick to set up and store. Great tool for training, competency testing and skills assessment for port (IVAD) palpation and accessing. Comes with a **real port**. With this model, it is possible to simulate accessing the following port placements: normal, “tipping”, “wandering” or deeply placed. Successful access is confirmed by a “blood” return. Fluid can be infused and “blood” withdrawn, as the model has its own 35cc “blood” reservoir bag neatly tucked inside. Accessing can be taught and practiced within the case or removed for group use.

The two round inserts, used to simulate the “wandering” and “tipping” port, are interchangeable to vary the experience. The

skin flap has two thicknesses—the 1/4” side will approximate the feel when palpating a port at an average depth, while the 1/2” side will approximate the feel when palpating a deeply placed port.

The skin flap is made of **VATA’s Dermalike II™** material, with 60% less needle drag when accessing, improved tear resistance to accept twice the number of needle sticks, no “oily/sticky” surface, and is stain resistant. The underlying soft tissue block permits the port to “float” when palpating through the skin flap, for a truly realistic experience.

Port - Body in a Box™

Includes a **real port** with 9.6FR catheter. Skin Flap - 7 1/8” X 5 1/2”, half at 1/4” thick and half at 1/2” thick; Soft tissue block with two interchangeable inserts that can simulate a “tipping” or “wandering” placement - all made of our new tissue material, **Dermalike II™**, 35cc “blood” reservoir bag in the tissue block for fluid infusion or “blood” withdrawal; 3/4” and 1” Huber needle w/ ext. set (one each); 5cc leuc-lock syringe—3 packets of lubricating gel for simulation of a “wandering” port - Clear container for storage of supplies - User’s Manual and heavy duty case - 9 1/2” X 6 1/2”.

5010 Lightly Pigmented

5011 Darkly Pigmented

9.5” x 6.8” x 2”

24.13cm x 17.15cm x 5.08cm

Product weight 2.37 lbs/1.1kg **\$231.00**

Accessories & Parts

0406 VATA Practice Port (IVAD)

Product weight 0.3 oz/8.5g **\$78.75**

Simulated Blood – Stain Resistant

1491 One Quart

Product weight 3.2 oz/91g **\$15.50**

1494 One Gallon

Product weight 9.6 oz/272g **\$25.25**

5025 3/4” 20G Right Angle Huber Needle with 8” Extension, Set (1 doz.)

Product weight 1.69 oz/48g **\$57.00**

5026 1” 20G Right Angle Huber Needle with 8” Extension, Set (1 doz.)

Product weight 1.69 oz/48g **\$57.00**

Basic Intraosseous (IO) Trainer – 4000/4001

A simple, low cost option for learning and practicing IO insertions.



4000



4001



Image of cross section.

VATA's Basic Intraosseous (IO) Trainer gives you a simple, low cost option for learning and practicing IO insertions. The trainer has a soft skin with thickness of 7mm, a cortical bone with thickness of 2.5mm and marrow with thickness of 23mm. The realistic feel of skin and bone materials allow for amazing realism right up to the "drop" in resistance felt when advancing past the cortical bone.

The base for the Basic IO Trainer prevents the trainer from moving around on your table as well as ensuring needles do not go all the way through to the table surface. The low price point makes it possible to purchase multiple trainers for a larger class and allows for each trainee to practice many times. With proper use, you can get 100+ accesses in each model. Available with either light or dark skin tone.



Basic Intraosseous (IO) Trainer

4000 Lightly Pigmented

4001 Darkly Pigmented

3.2" x 2.2" x 1.7"
22.86cm x 17.78cm x 5.08cm
Product weight 3.4 oz/97g

\$73.75

Nita Newborn™ Infant Venous Access Simulator – 1800

Developed to teach and practice the vascular accessing of newborns and infants. 100% Latex-Free!

A unique, anatomically correct representation of a 4 lbs., 16" female baby developed to teach and practice the vascular accessing of newborns and infants, including the availability of those veins uniquely used in this age group. There are barely discernible blue veins under the replaceable translucent "skins" on the head, right and left arms and the right leg.

Veins made with latex-free **Dermalike II™**—with 50% less needle drag when accessing and improved tear resistance to permit a greater number of needle "sticks". The veins presented include the temporal, external jugular, post-auricular, basilic, cephalic, saphenous and popliteal. When accessing a "pop" is felt as the needle enters the vein followed by a realistic flashback of simulated blood confirming proper needle placement. The veins were specifically

designed to have a small internal diameter, as you would find on a small newborn, to make accessing more challenging, improving technique and confidence. You can practice accessing, securing, dressing, site care, and maintenance for standard IVs and PICC (Peripherally Inserted Central Catheter).

Nita Newborn™ also incorporates a unique life-like umbilicus allowing for the repeated use of a 5FR umbilical catheter to access the umbilical vein, with proper placement verified by a "blood" return. Umbilical tape can be tied around the umbilicus to secure the catheter. Nasal and oral openings allow placement of nasal cannulas, as well as endotracheal, nasogastric, and feeding tubes to teach suctioning, securing, dressing, cleansing, and maintenance. A great tool for teaching, training, competency testing and skills assessment.

Nita Newborn™

Includes an anatomically correct representation of a 16" female baby, replaceable translucent "skins" on the head, right and left arms and right leg, underlying blue veins now made with latex-free, accessible umbilicus, "blood" fluid bag with attached tubing, simulated blood, diaper, user manual and durable, zippered, padded carrying case with handles.



1800 Nita Newborn™ Infant Venous Access Simulator

15" x 13" x 4"

38.1cm x 33.02cm x 10.16cm

Product weight 4 lbs/1.8kg **\$847.00**

Accessories & Parts

1801 Replacement Skin Set - Latex Free (Head, Leg, Right Arm and Left Arm) & Vein Set
Product weight 1.5 lbs/680g **\$195.25**

1805 New Vein Set with Umbilical Valve Attached-Latex Free (replaces 0803)
Product weight 12 oz/340g **\$111.25**

0804 Replacement Umbilicus
Product weight 0.52 oz/15g **\$44.00**

Simulated Blood – Stain Resistant

1491 One Quart
Product weight 3.2 oz/91g **\$15.50**

1494 One Gallon
Product weight 9.6 oz/272g **\$25.25**



Peter PICC Line™ – 0600

Life-sized model for teaching PICC insertion technique.

The only available teaching model that permits the practice of placing Peripherally Inserted Central Catheter Lines (PICC Lines). The rapid acceptance and increased use of PICC lines creates a need to be able to properly teach this procedure. **Peter PICC Line™** allows the teaching, practice and assessment of this insertion technique.

This portable teaching model has a replaceable translucent arm skin that allows the visualization of the underlying cephalic, basilic and median basilic veins which are presented as barely visible blue veins. The superior vena cava, subclavian, axillary and jugular veins are also present, plus a movable chin that when turned can simulate the occlusion of the jugular to prevent the

PICC Line from traveling this route. Proper placement can be confirmed by viewing the distal tip of the PICC in the viewable superior vena cava on the side of the model.

Comes with removable ribs with overlying tissue pad. The ribs are palpable and, with the landmarks on the chest, permit the practice of measuring catheter length to the correct intercostal space. The life-sized model permits the supplies needed for a PICC insertion to be laid out and sterile technique taught as well as practiced.

A great tool for teaching, training, competency testing and skills assessment. Includes a durable zippered, padded, carrying case with handles and a zippered supplies pouch.

Peter PICC Line™

Includes life-sized chest, right arm, neck and chin, replaceable body and translucent arm “skins”, removable ribs with overlying tissue pad, underlying separate arm and body blue veins, viewable superior vena cava vial, “blood” fluid bag with attached tubing, simulated blood, user manual and durable, zippered, padded carrying case with handles and a zippered supplies pouch.



0600 Peter PICC Line™

22" x 17" x 5"

55.8cm x 43.18cm x 12.7cm

Product weight 10 lbs/4.52kg

\$894.00

Accessories & Parts

0601 Arm Vein Tubing Set

Replacement arm vein tubing consisting of the basilic, cephalic and median basilic veins for attachment to body veins.

Product weight 0.92 oz/26g

\$106.25

0602 Body Vein Tubing Set

Replacement body vein tubing consisting of the axillary, jugular and subclavian for attachment to arm veins, with attached connectors.

Product weight 1.51 oz/43g

\$115.25

0603 Arm Skin Replacement

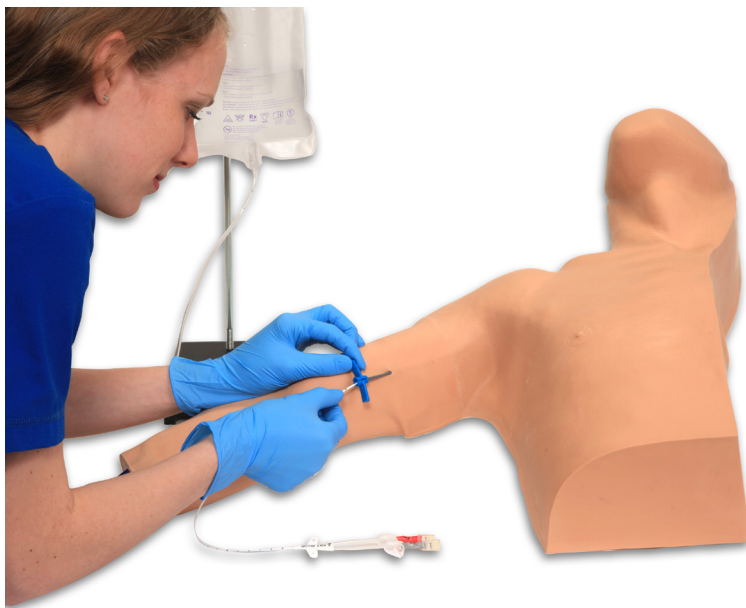
Product weight 9 oz/255g

\$84.25

0604 Body Skin Replacement

Product weight 2.2 lbs/997.9g

\$149.50



Seymour II™ Wound Care Model – 0910/0920

Practice dressing changes, NPWT and wound assessment on VATA's most comprehensive wound care skills trainer, Seymour II.



0910



0920

Seymour II™ is made with a flexible, life-like material that permits the application and easy removal of dressings, without leaving an adhesive residue. Still the most comprehensive model of its kind, molded from a 74-year-old patient, looks and feels like the real thing.

Displaying the following pressure injuries* (NPUAP 2016 – National Pressure Ulcer Advisory Panel):

- Stage 1, Stage 2, Stage 3 with subcutaneous fat, undermining, tunneling, slough and granulation tissue
- A deep Stage 4 with eschar, subcutaneous fat, undermining, tunneling, slough and exposed bone (with osteomyelitis)
- DTPI (Deep Tissue Pressure Injury), unstageable full eschar/slough wound
- 5 1/2" dehisced wound

The Stage 4 and Stage 3 pressure injuries are positioned so that a "bridging" dressing for use with a vacuum assisted closure and negative pressure wound therapy devices can be demonstrated and practiced.

Wound assessment has become critical to the operation of health agencies, as inaccurate wound assessment can affect reimbursement, cause inaccurate reporting of patient outcomes and the appearance of potential adverse events. The **Seymour II™** model makes it possible to visualize and understand the differences in wounds. Once the different etiologies are understood, you can discuss and devise treatment plans that will deliver optimized patient care.

Great care has been taken to color each wound just as you would see it on a patient. You are able to demonstrate and practice

wound cleansing, classification, staging, and assessment, as well as the measurement of wound length, depth, undermining, and tunneling. The positioning of the wounds permits multiple dressings to be demonstrated at the same time.

Seymour II™ Wound Care Model

0910 Lightly Pigmented

0920 Darkly Pigmented

12.3" x 12.6" x 6"

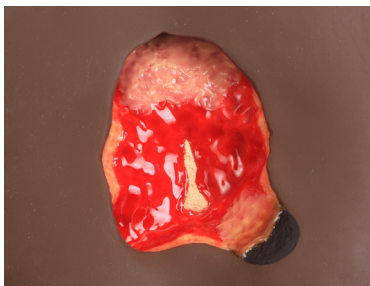
31.12cm x 32.07cm x 12.7cm

Product weight 4.1 lbs/1.86kg **\$610.00**

Accessories & Parts

0901 Optional Carrying Case

Product weight 1.6 lbs/726g **\$99.25**

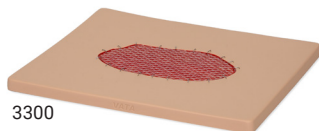


A deep Stage 4.

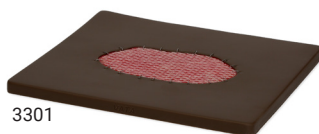
Wound Boards – 3300/3301, 3302/3303, 3304/3305

Practice routine cleansing and dressing changes on a variety of wounds.

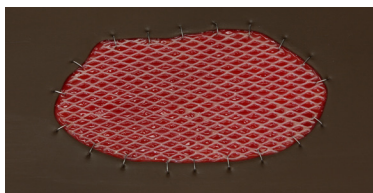
Skin Graft Wound Board



3300



3301



VATA's Wound Boards are realistic patient simulation models for educating individuals about various wounds and their care. Great care is taken to recreate and hand paint the wounds just as you would see it on a patient for the most life-like patient training scenario. These models are made of a life-like material that permits the application and easy removal of dressings, without leaving an adhesive residue. Patient approved ointments*, standard dressings, and vacuum assisted closure or negative pressure wound therapy devices can be demonstrated and practiced.

These wound care models are great tools for training, competency testing, skills assessment and wound dressing techniques.

**Do not use ointments or dressings that contain silver as they may stain the model*

Dehisced Wound Board



3303



3302



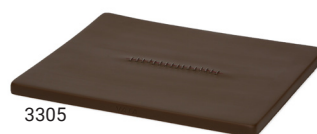
The wound care boards are also excellent visual aids for educating those who cannot read well enough to understand basic health care information, allowing them to see and understand what is needed for proper care. Routine cleansing and dressing changes can be taught and practiced by healthcare providers, patients, families, and caregivers.

- 3300/3301 Skin Graft Wound Board displays a 5.75" x 3" stapled skin graft.
- 3302/3303 Dehisced Wound Board displays a 4.75" x 1.25" stapled dehisced wound with both undermining and tunneling present
- 3304/3305 Stapled Incision Wound Board displays a 4.25" stapled Incision wound

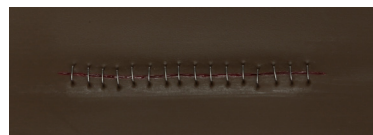
Stapled Incision Wound Board



3304



3305



Skin Graft Wound Board

3300 Lightly Pigmented

3301 Darkly Pigmented

8" x 10" x 0.5"
20.3cm x 25.4cm x 1.27cm
Product weight 1.27 lbs/580g

\$184.00

Dehisced Wound Board

3302 Lightly Pigmented

3303 Darkly Pigmented

8" x 10" x 1"
20.3cm x 25.4cm x 2.54cm
Product weight 2.06 lbs/940g

\$182.00

Stapled Incision Wound Board

3304 Lightly Pigmented

3305 Darkly Pigmented

8" x 10" x 0.5"
20.3cm x 25.4cm x 1.27cm
Product weight 1.14 lbs/520g

\$178.00

Ostomy Pouching Trainer™ – 0270/0275



The **Ostomy Pouching Trainer™ Model 0270 & 0275** helps prepare patients, their families, and healthcare professionals for this life-changing event, improving their initial exposure and their future quality of life. The **Ostomy Pouching Trainer™** will facilitate the practice of proper pouching techniques to maintain healthy skin while developing good hand-eye coordination. Pre-operative teaching allows patients and their families to begin learning about ostomies prior to surgery when they are less distracted—reducing anxiety. They can practice using four different stomas:

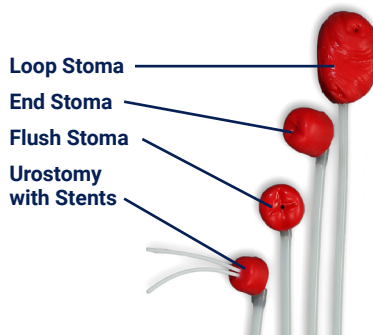
- Urostomy with Stents
- Loop Stoma (you provide the bridge)
- End Stoma
- Flush Stoma

With the **Ostomy Pouching Trainer™**, each of these stomas can have simulated stool or urine output and can be placed in four different locations:

- Contact dermatitis
- Standard healthy skin
- Flush placement with folds and mucocutaneous separation
- Candidiasis

Patients and healthcare staff can grasp, in a realistic, life-sized model, what they may have had difficulty understanding from pictures, especially in those cases where language or comprehension may be an obstacle. Seeing the stomas and visualizing the location and function of the various types, including the discharge from them, is essential to learning.

Proper teaching helps increase patients' understanding of their condition and the adjustments which may be necessary for achieving a satisfactory standard of life with their new stoma.



Patients and healthcare professionals can practice proper stoma pouching techniques with this wearable trainer.

Contact dermatitis

Standard Healthy Skin



Flush placement with folds and mucocutaneous separation

Candidiasis



A healthcare instructor can push on the syringe causing discharge from the stoma, so the patient can experience and be prepared for what to expect.



The site can be used to practice the application of ostomy pastes and waxes.



Velcro belts can be combined to accommodate larger waist sizes.

Ostomy Pouching Trainer™

Includes 1 Pad, 2 Velcro belts, 4 stomas: Urostomy, End, Loop and Flush, Luer Lock Syringe 35ml, Simulated Urine concentrate 470ml bottle, five 60ml bottles of Simulated Stool powder, User's Manual.

0270 Lightly Pigmented

0275 Darkly Pigmented

17.5" x 5.3" x 0.8"

44.5cm x 13.5cm x 2cm

Product weight 2.5 lbs/1.1kg

\$425.00

Accessories & Parts

Replacement Pad

Includes 1 Pad and 2 Velcro belts.

0271 Lightly Pigmented

0276 Darkly Pigmented

Product weight 2 lbs/907kg

\$338.00

0277 Velcro Belt for use with Pad (each)

Product weight 0.64 oz/18g

\$8.75

0278 Luer lock Syringe, 35ml

Product weight 1.28 oz/36g

\$3.50

0280 Urostomy Stoma with stents and attached tubing

Product weight 0.8 oz/23g

\$38.00

0281 End Stoma with attached tubing

Product weight 1.44 oz/41g

\$35.75

0282 Loop Stoma with opening for insertion of your bridge, with attached tubing

Product weight 0.64 oz/18g

\$38.00

0283 Flush Stoma with attached tubing

Product weight 1.28 oz/36g

\$35.75

0295 Simulated Urine, 470ml bottle with liquid concentrate

Product weight 2.4 oz/68g

\$10.50

0296 Simulated Stool, powder concentrate, five 60ml bottles

Product weight 8 oz/227g

\$30.00

Otto Ostomy™ – 0310

Otto Ostomy™ will help clinicians, staff and patients along with their families and friends become more knowledgeable about what to expect, while learning how ileostomies, colostomies, gastrostomies, ureterosigmoidostomies and tube cecostomies function. The more healthcare providers understand ostomies, the better they will be able to educate and encourage their patients about this life-changing event. To a great extent, ostomy care is a visual specialty. This has been described as the patient seeing and understanding “how their ‘plumbing’ has been rearranged”. With **Otto Ostomy™**, healthcare staff and patients can visually grasp, in a life-sized 3D model, what they may have had difficulty understanding from pictures and a verbal description. Seeing the 3D digestive and urinary tracts and visualizing the location and function of the various organs is essential to learning, especially in those cases where cognitive processes or language may be an obstacle. Proper teaching helps increase patients’ understanding of their condition and the adjustments which may be necessary for achieving a satisfactory standard of life with their new stoma.

Using the organs and stomas on **Otto Ostomy™**, helps clinicians learn to quickly diagnose problems, plan, implement and evaluate care specific to the simulation displayed in skills lab, or demonstrate their proficiency in competency testing, which results in confident staff and the best patient outcomes. Pre-operative teaching allows patients and their families to begin learning about ostomies prior to surgery when they are less distracted—reducing anxiety. That’s why **VATA**, a leader in anatomical healthcare models, has created **Otto Ostomy™**, the ultimate educational tool for nurses and patients.

The organs on **Otto Ostomy™** were molded from an actual patient’s CT scan, resulting in all the organs on the model being of the exact size and location as they were in the patient. **Otto Ostomy™** has the following structures molded from the same patient:

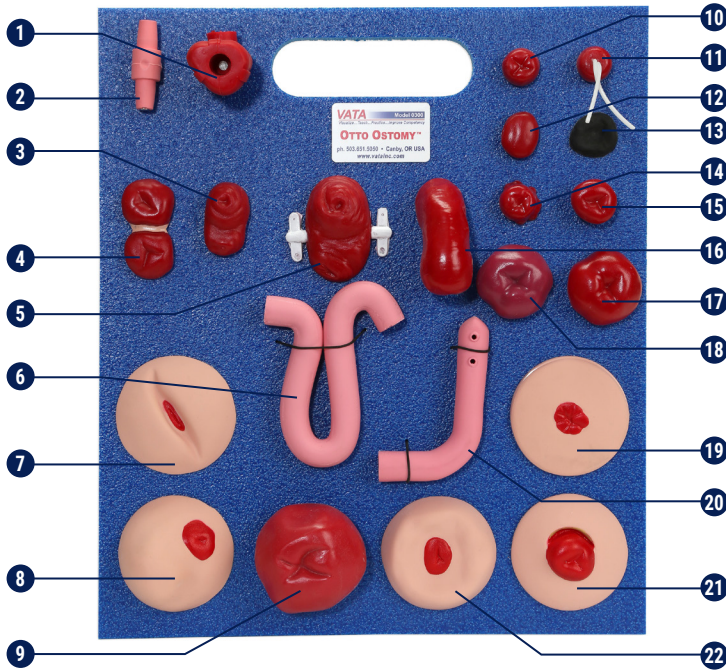
- Stomach
- Small Intestine
- Large Intestine
- Rectum
- Kidneys
- Ureters
- Bladder
- Clear Torso Shell



Carrying Case Included



Advanced Stoma Package – 0305



- 1 Ileostomy Adapter – 0342
- 2 Colostomy Adapter – 0343
- 3 Loop Stoma without Rod – 0315
- 4 Double Barrel Stoma – 0316
- 5 Loop Stoma With Rod – 0314
- 6 Small Intestinal Segment – 0341
- 7 In-Skin-Fold Stoma – 0330
- 8 Parastomal Hernia Stoma – 0331
- 9 3" Diameter Stoma – 0322
- 10 7/8" Diameter Stoma – 0311
- 11 Urostomy Stoma With 3" Stents In Place – 0313
- 12 Oval Stoma – 0319
- 13 Necrotic Stoma – 0324
- 14 Granuloma Stoma – 0323
- 15 Mushroom Stoma – 0320
- 16 Prolapsed Stoma – 0321
- 17 2" Diameter Stoma – 0312
- 18 Ischemic Stoma – 0325
- 19 Flush Stoma – 0334
- 20 Ileal Conduit – 0340
- 21 Mucocutaneous Separation Stoma – 0332
- 22 Recessed Stoma – 0333

Otto Ostomy™

Includes anodized aluminum base, clear torso shell with five openings for stoma placement and gastrostomy tube, stomach, small intestine, four large intestine segments, rectum, kidneys, ureters, bladder, ileal conduit, two small intestine segments, ileostomy adapter, colostomy adapter, 18 stomas: 7/8" diameter, 2" diameter, Urostomy with 3" Stents (to be used with the ileal conduit), loop stoma with rod, Loop without Rod, Double Barrel, Oval, Mushroom, Prolapsed, 3" Diameter, Granuloma, Necrotic, Ischemic, In-Skin-Fold, Parastomal Hernia, Mucocutaneous Separation, Recessed, Flush, foam stoma storage board, carrying case and user manual.

0310 Otto Ostomy™ Advanced Model

16.25" x 10" x 16"
 41.3cm x 25.4cm x 40.6cm
 Product weight 18 lbs/8.2kg **\$2,138.00**

Accessories & Parts

0305 Advanced Stoma Package – Replacement

Product weight 1.7 lbs/771g **\$658.00**

**Replacement stomas can be purchased individually.*

Pat Pressure Injury Staging Model™ – 0980

Pat brings wound care conditions alive in a way that photos cannot.



A unique, compact, comprehensive and realistic model displaying the following pressure injuries* (NPUAP 2016 – National Pressure Ulcer Advisory Panel):

- **Stage 1** (in both darkly and lightly pigmented skin)
- **Stage 2** (as an intact blister and an open wound)
- **Stage 3** with eschar, subcutaneous fat, slough, undermining, tunneling, slough and granulation tissue
- **Shallow Stage 4** over the malleolus with exposed tendon and bone (with osteomyelitis)
- **Stage 4** with eschar, slough, undermining, tunneling and exposed tendon, muscle and bone (with osteomyelitis).

The lightly pigmented skin also displays a DTPI (Deep Tissue Pressure Injury) and blood blister. The darkly pigmented skin section shows how different a Stage 1, blood blister and DTPI may appear depending on the pigmentation of the skin. The DTPIs, when palpated, have a “mushy/boggy” feel, which can be helpful in darkly pigmented patients where visualization of the injury may not be apparent.

In the past, healthcare providers have been taught wound care through high-quality photographs and video. **Pat Pressure Injury**

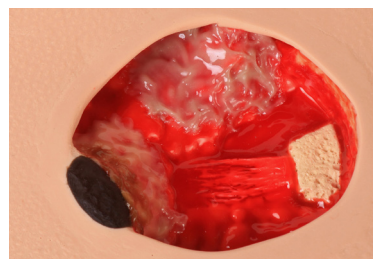
Staging Model™ brings wound care alive in a way that even the best of photographs cannot do. This model makes it possible to visualize and understand the differences in wounds. Great care has been taken to color each wound just as you would see it on a patient. Once the different wounds are understood, you can discuss assessment and devise treatment plans that will deliver optimized patient care.

Pressure injury assessment has become critical to the operation of health agencies, as inaccurate wound assessment can affect reimbursement, cause inaccurate reporting of patient outcomes and the appearance of potential adverse events. **Pat Pressure Injury Staging Model™** is an effective tool to educate all healthcare providers, patients, families and caregivers in the identification and staging of pressure injuries. This model is also an excellent visual aid for educating those who cannot read well enough to understand basic health care information, allowing them to see what can occur without proper care. Routine cleansing and dressing changes can be taught and practiced on all the wounds.

This product is made of a unique new material that permits the application and easy removal of dressings without the need to constantly cleanse the skin of residual adhesive.



Shallow Stage 4 over the malleolus with exposed bone and tendon.



Stage 4 with exposed bone, tendon, muscle and undermining, tunneling, eschar and slough.

Pat Pressure Injury Staging Model™

0980 8.25" x 12.5" x 1.75"
21 cm x 31.8 cm x 4.4 cm
Product weight 3.6 lbs/1.6 kg **\$483.00**

Accessories & Parts

0981 **Optional Carrying Case**
Product weight 1.2 lbs/544g **\$58.50**

Wilma Wound Foot™ – 0950/0955

Wilma features twenty true-to-life foot conditions for wound care education.

Wilma Wound Foot™ is molded from an 80-year old patient for a realistic appearance. Twenty different conditions are presented on this model so you can see and understand how they are different. Great care has been taken to hand paint each wound just as they would be seen on a patient for the most life-like patient simulation. Once the different etiologies are understood, they can be discussed and a treatment plan devised that will deliver optimized patient care.

Wilma is made of flexible material permitting the toes to be moved for closer examination or the application of dressings. This unique material permits the application and removal of dressings without leaving adhesive residue, when used according to supplied instructions. Each model is supplied with a positioning base for the foot which will give hands free access to all the sites when applying dressings or for teaching. An optional carrying case is also available.



The following wounds, pressure injuries and foot abnormalities are presented on Wilma Wound Foot™:

- Stage 1 pressure injury on the medial malleolus
- Stage 2 pressure injury on the lateral foot (behind the 5th toe)
- Stage 3 pressure injury on the heel with infection
- Stage 4 pressure injury on the lateral malleolus with exposed tendon and bone (with osteomyelitis)
- Stage 4 pressure injury on the medial foot (behind the great toe) with exposed tendon and slough
- DTPI (Deep Tissue Pressure Injury) on top of foot with “mushy/boggy” feel when palpated
- Unstageable eschar on lateral foot
- Full thickness ulcer, plantar, 1st digit, probable diabetic neuropathic etiology
- Callus under the 4th metatarsal phalangeal joint
- Amputated 2nd toe
- Dry gangrene of the 5th toe, due to ischemia
- Interdigital maceration between the 4th and 5th toe
- Partial thickness wounds between 3rd and 4th toe at 1st joint
- Corn on top of 3rd toe
- Callus at tip of 3rd toe
- Ingrown toenail on the medial aspect of the great toe
- Fungal thickened toenail on the great toe
- Blister on great toe at the first joint
- Hammer toes - 3rd, 4th and 5th toes
- Skin stapled wound

Wilma Wound Foot™

0950 Lightly Pigmented

0955 Darkly Pigmented

11" x 9" x 3.8"

27.94cm x 22.86cm x 9.53cm

Product weight 2.6 lbs/1.18kg

\$559.00

Accessories & Parts

0951 Optional Carrying Case

Product weight 1.5 lbs/680g

\$51.25

Vinnie Venous Insufficiency Leg™ – 0550

Training and skills assessment in the care of patients with venous insufficiency can be performed on Vinnie.



Vinnie Venous Insufficiency Leg™ is a great tool for teaching, training, competency testing and skills assessment in the care of patients with this condition. Molded from an actual patient, **Vinnie** is the most realistic venous insufficiency leg model available anywhere. The following conditions* are represented on **Vinnie Venous Insufficiency Leg™** :

- Venous Pressure Injuries
- Cellulitis
- Lipodermatosclerosis
- Calciphylaxis
- Stasis Dermatitis
- Varicose Veins
- Hemosiderin Staining
- Healed Foot Pressure Injury
- Diabetic Pressure Injury
- Vasculitis
- Pyoderma Gangrenosum
- Atrophie Blanche
- Pitting Edema
- Reticular Veins
- Telangiectasia Veins
- Maceration
- Fungal Thickened Toenails
- Individual moveable toes for compression wrapping

There are two areas of pitting edema on **Vinnie** – one over the tibia, which when compressed takes 2+ seconds to return and one on the dorsal foot, which when compressed takes 3+ seconds to return. This offers a unique hands-on experience for clinicians to practice and learn how to assess this condition.

Treating edema can be achieved by compression wrapping, but anecdotally, nurses appear apprehensive about the technique. It may be relatively simple but education, training and competency is essential as any bandage applied inappropriately around digits or limbs may cause trauma. **Vinnie** permits the practice of these techniques, as it has pliable individual toes which can be individually wrapped to start this process, then moving up the leg, with single or multi-layer wraps.

An **Optional Display Stand - 0552** is available which permits **Vinnie** (also used for **Annie Arterial Insufficiency Leg™ - 0555**) to pivot from above the knee, providing a realistic experience in supporting the leg while practicing compression wrapping, dressing changes, or identifying conditions. In addition the stand permits **Vinnie** to be secured in a vertical position for those times when this is beneficial for training. The top of the leg has a unique molded in swivel fixture that permits the leg to be rotated a full 360 degrees for easy visualization.

** Some of the conditions represented on this model may appear different on individual patients, yet still be considered the same condition. The representations of the conditions we have chosen to display are based on feedback from wound care professionals.*



Venous Ulcer on Vinnie Leg

Vinnie Venous Insufficiency Leg™

0550 28" x 10" x 6"
71.1cm x 25.4cm x 15.2cm
Product weight 8 lbs/3.62kg **\$1,263.00**

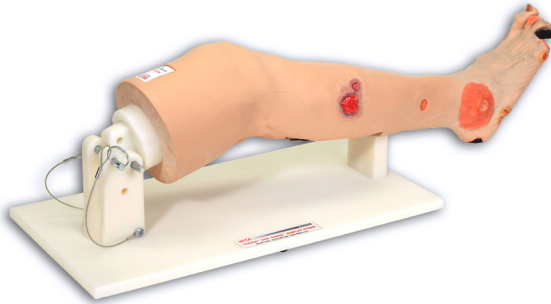
Accessories & Parts

0552 **Optional Display Stand for Vinnie or Annie Insufficiency Leg Models**
Product weight 3.8 lbs/1.72kg **\$125.50**

0556 **Optional Soft-Sided Carrying Case for Vinnie or Annie Insufficiency Leg Models**
Product weight 4 lbs/1.8kg **\$187.00**

Annie Arterial Insufficiency Leg™ – 0555

Annie is an excellent trainer for competency testing and care of patients with arterial insufficiency conditions.



****Shown with Optional Display Stand - 0552, not included**

Annie Arterial Insufficiency Leg™ - 0555 is great tool for teaching, training, competency testing and skills assessment in the care of patients with this condition. Molded from an actual patient, **Annie Arterial Insufficiency Leg™** is the most realistic arterial insufficiency leg available anywhere. The following conditions* are represented on **Annie Arterial Insufficiency Leg™**:

- Arterial Pressure Injuries
- Necrotic Toe
- Eschar on Heel
- Charcot Foot (shape of foot)
- Neuropathic Pressure Injury (bottom and inner side of foot)
- Cellulitis
- Fungal Thickened Toenails
- Callous
- Heel Fissures
- Mottled Skin
- Pyroderma Gangrenosum
- Amputated Toe
- Ulcer (top of toe)
- Calciphylaxis
- Hammer Toes



Arterial Ulcer on the Annie Leg

Annie Arterial Insufficiency Leg™ also includes an option for users to access audio recordings of Arterial Doppler Sounds via a QR code located on the model and product legend. The Doppler sounds will include Monophasic, Biphasic, Triphasic and Venous.

An **Optional Display Stand - 0552** is available which permits **Annie** (also used for **Vinnie Venous Insufficiency™ Leg - 0550**) to pivot from above the knee, providing a realistic experience in supporting the legs while practicing dressing changes or identifying conditions. In addition the stand permits **Annie** to be secured in a vertical position for those times when this is beneficial for training. The top of the leg has a unique, molded-in swivel fixture that permits the leg to be rotated a full 360 degrees for easy visualization.

** Some of the conditions represented on this model may appear different on individual patients, yet still be considered the same condition. The representations of the conditions we have chosen to display are based on feedback from wound care professionals.*

Annie Arterial Insufficiency Leg™

0555 26" x 8" x 6"
66cm x 20.3cm x 15.2cm
Product weight 4 lbs/1.8kg **\$951.00**

Accessories & Parts

0552 **Optional Display Stand for Vinnie or Annie Insufficiency Leg Models**
Product weight 3.8 lbs/1.72kg **\$125.50**

0556 **Optional Soft-Sided Carrying Case for Vinnie or Annie Insufficiency Leg Models**
Product weight 4 lbs/1.8kg **\$187.00**



Freddie Fistula™ Skills Trainer – 0230

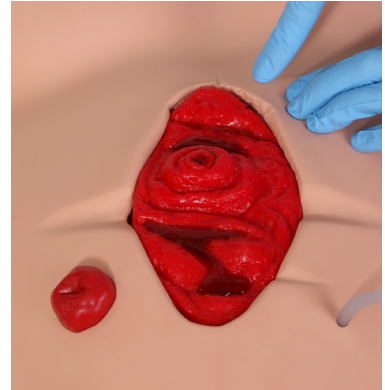
Freddie Fistula™ Skills Trainer was developed to provide clinicians with a model for teaching and practicing the management of abdominal fistulas. Containment of the effluent from fistulas is most commonly managed with skin protection, dressings, regulated wall suction, or negative pressure therapy. **Freddie Fistula™** permits the teaching and practicing of various dressings that can be used for drainage management and the classification of the fistula or fistulas.

Freddie Fistula™ presents a realistic feeling soft abdomen with an open abdominal wound showing exposed intestines with "gutters" on all sides, stoma and drainage tube. The abdomen includes a base with a recessed area around the perimeter that can hold 700ml of effluent as well as a rod that can be placed into a built-in fixture to hang the effluent bag or snapped into the bottom of the base when not in use. There are three separate fistulas present in the intestines:

- Stomatized Fistula
- Non-Stomatized Fistula
- Hidden Fistula – Location is not observable

Any combination of the three fistulas can be opened to permit effluent to exit the fistulas via the color coded pinch clamps. This can challenge the clinician to apply a dressing while dealing with effluent, just as you would with a real patient! The proprietary skin permits standard dressings to adhere and be easily removed. Negative pressure dressings will seal when applied.

With **Freddie Fistula™ Skills Trainer** you can use skin barriers—solid wafers, powder, paste, skin sealants, and standard dressings. **Freddie Fistula™** is a great model to teach, practice, assess competency and discuss the various standard and innovative techniques for dealing with this most challenging medical condition.



Freddie Fistula™ Skills Trainer

Includes, soft abdomen, open abdominal wound with gutters, drainage tube, integral base, snap in place rod to hang effluent, 500ml fluid bag, quart of effluent concentrate, identification sheet, soft-sided carrying case and three fistulas—stomatized fistula, non-stomatized fistula, hidden fistula, and soft sided carrying case.

0230 Freddie Fistula™ Skills Trainer

20.5" x 19" x 8"
52.07cm x 48.26cm x 20.32cm
Product weight 13 lbs/5.9kg **\$931.00**

Accessories & Parts

Effluent Concentrate – Stain Resistant

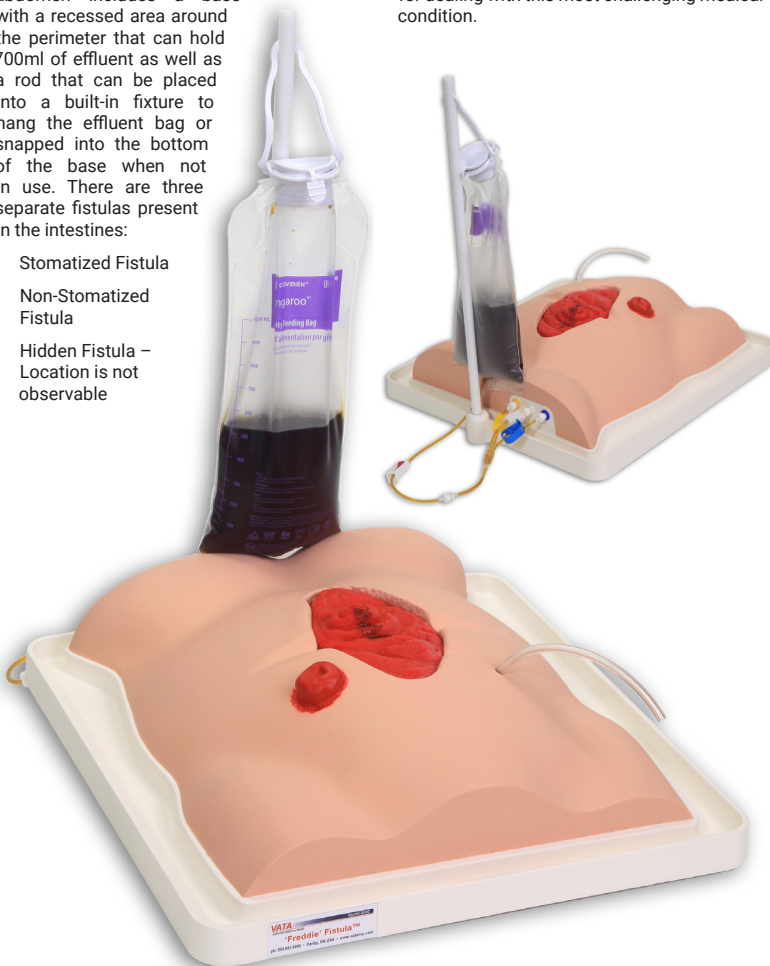
0232 One Quart
Product weight 2.4 oz/68g **\$15.50**

0233 One Gallon
Product weight 7.2 oz/204g **\$29.50**

0234 3-Way Color-Coded Tubing Set with Pinch Clamps
Product weight 3.03 oz/86g **\$42.00**

0235 Plastic Support Rod
Product weight 0.68 oz/19.4g **\$46.50**

0611 500 ml Fluid Bag with Cap and Holder
Product weight 15.49 oz/439g **\$25.25**



Stan Stage 4 Pressure Injury Model™ – 0970/0975

A great tool for training, competency testing, skills assessment, dressing techniques and use of NPWT devices.



0970



0975

Designed for teaching and training with vacuum assisted closure and negative pressure wound therapy devices, **Stan** features a large sacral Stage 4 pressure injury* (NPUAP 2016 – Pressure Ulcer Staging Guidelines), with eschar, subcutaneous fat, undermining, tunneling, slough, eschar and exposed bone (with osteomyelitis) and a Stage 3 pressure injury with subcutaneous fat and granulation tissue.

The large size and depth of the Stage 4 pressure injury, as well as the undermining and tunneling, make it ideal for practicing the proper dressing and preparation of a large wound for use with a negative pressure wound therapy device. The Stage 3 pressure

injury is positioned so that the Stage 4 can be dressed by itself or a “bridging” dressing to demonstrate and practice this skill.

The skills that healthcare professionals learn with this model can be used to obtain positive outcomes with a variety of chronic and acute wound types, such as other pressure injuries, diabetic wounds, abdominal wounds, trauma wounds, flaps and grafts. Compact and weighing only 2 lbs., this model is easily transportable.

This model is made of a unique, flexible material that permits the application and removal of dressings without leaving an adhesive residue.

Stan Stage 4 Pressure Injury Model™

0970 Lightly Pigmented

0975 Darkly Pigmented

11" x 10" x 2.3"
27.94cm x 25.4cm x 5.72cm
Product weight 1.6 lbs/726g

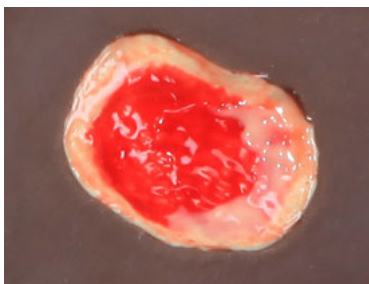
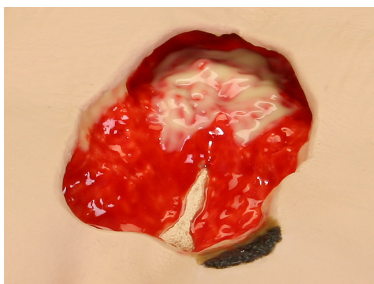
\$399.00

Accessories & Parts

0971 Optional Carrying Case

Product weight 1.5 lbs/680g

\$51.25



VATA

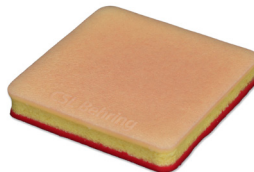
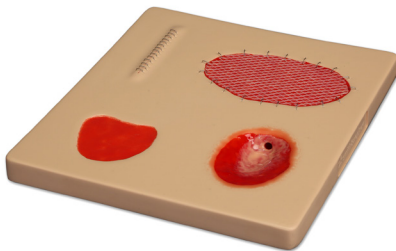
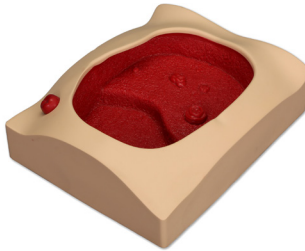
Realism in Clinical Simulation

Custom Products

From custom wound boards to fistulas and injection pads, our custom products run the gamut. **VATA** custom products can help easily demonstrate how a product works at tradeshows or on sales visits.

We work with companies at any point in the product lifecycle to bring their innovative ideas to life. As a single-source partner, we enable our customers to save costs and speed time to market. All custom products can have branding added either by a custom label or by molding a company or brand logo into the product.

These past custom products demonstrate our scope and what can be possible for your product.



Please note: these custom products are examples only and are not available for purchase.

Ready to learn more? Reach out to us anytime!

308 South Sequoia Parkway | Canby, Oregon 97013 USA
ph. 503.651.5050 | fax 503.651.5052 | www.vatainc.com | email info@vatainc.com